



CAAC Design and Construction Update

2-17-2022



2022 Projects

New Buildings & Additions

Marshdale ES - Replacement HCM – GC GH Phipps

Construction



D'Evelyn – 8 CR Addition HCM – GC Himmelman

Construction



Powderhorn ES - Addition Hollis & Miller – Himmelman

Construction



Prospect Valley ES - Replacement MOA – GH Phipps

Construction



Evergreen MS Efficiency & Future Ready Construction

AMD – Haselden



Evergreen HS
Efficiency Future Ready
DLR – CMGC JHL

Construction



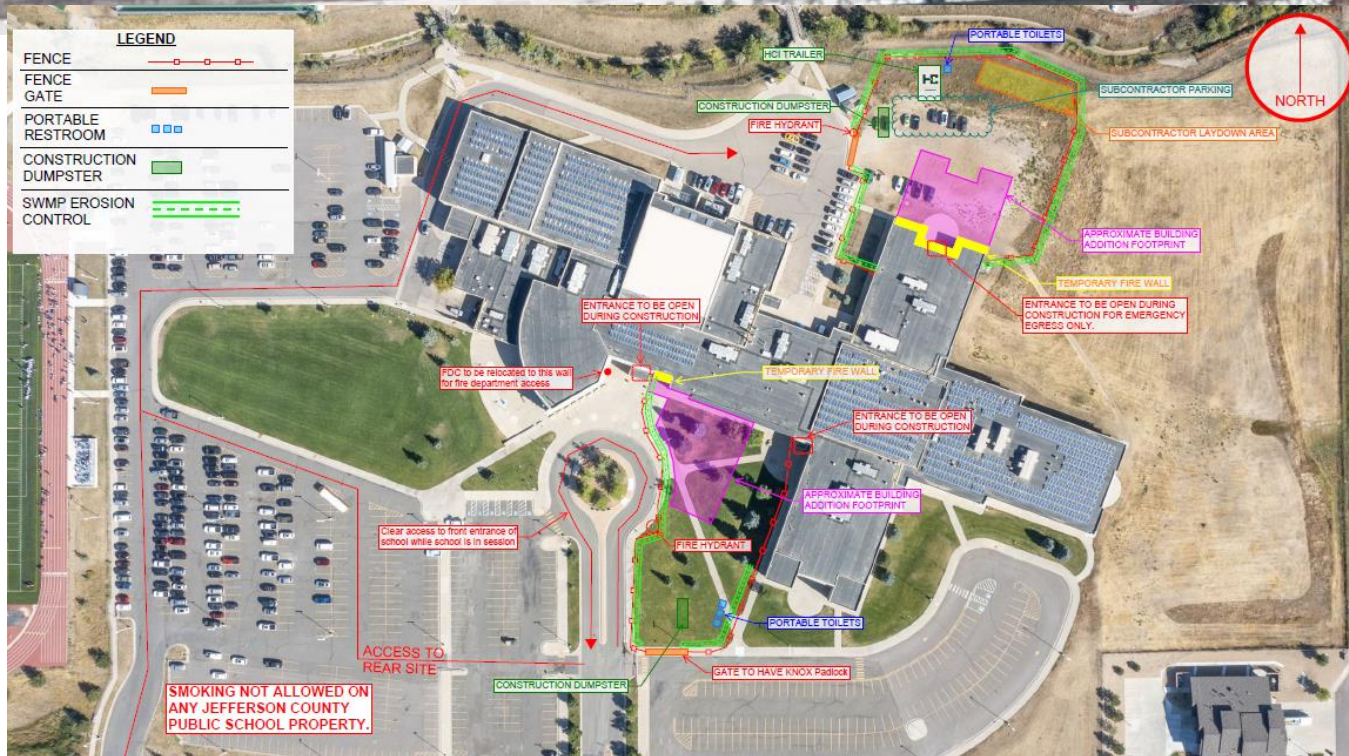
Jeffco Open - Addition HCM - Bassett

Construction



Ralston Valley HS - Addition EUA - Himmelman

Construction



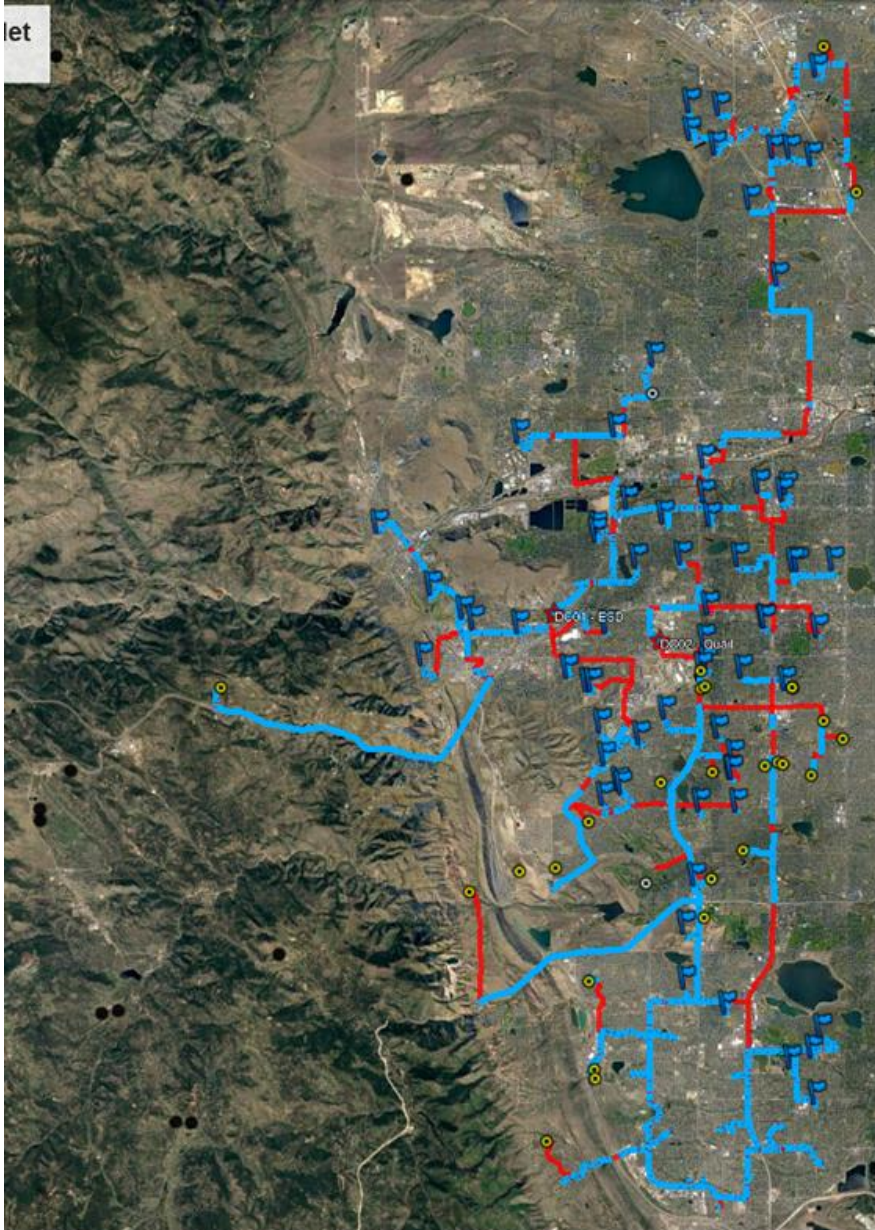
Standley Lake HS - Addition Cannon – FCI Constructors

Construction



JeffcoNET Henkels & McCoy - Design Build

Construction



Project Information

Project Start – April 29, 2020

Total Miles of conduit to be bored – 128

Miles installed – 65 (51%)

Fiber placed at 98 schools (MDF to Street)

7 crews working in Lakewood and Westminster

2022 44 - Efficiency Future Ready & DW projects

DW – Roofing
Pennington ES
Roof Tech – Grabau

Construction



DW – Roofing -
Campbell ES (Grabau), Fairmount ES (FR) ,
S Lakewood ES (DC), Summit Ridge MS (UM), &
Pennington ES (Grabau)
SR+DK

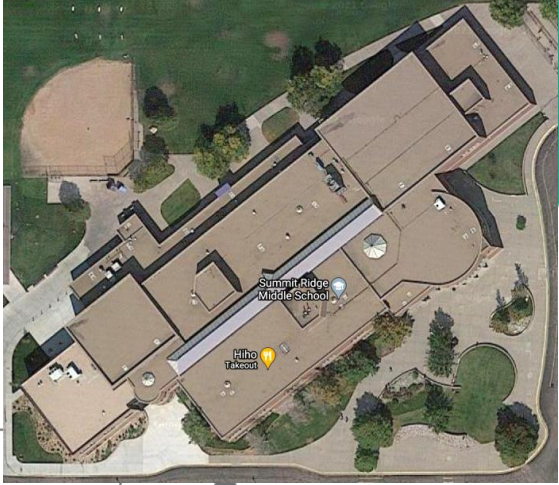


Fairmount



Campbell

S Lakewood

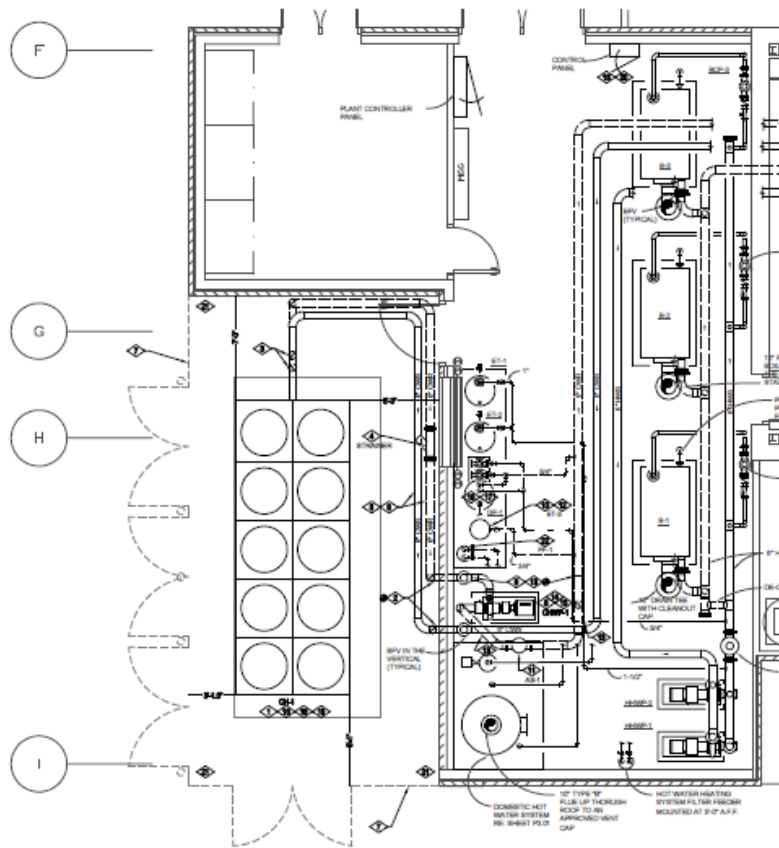


Summit Ridge BOE 2/3/22

Efficiency Future Ready North Arvada MS

Construction

Columbine Engineering – JCOR



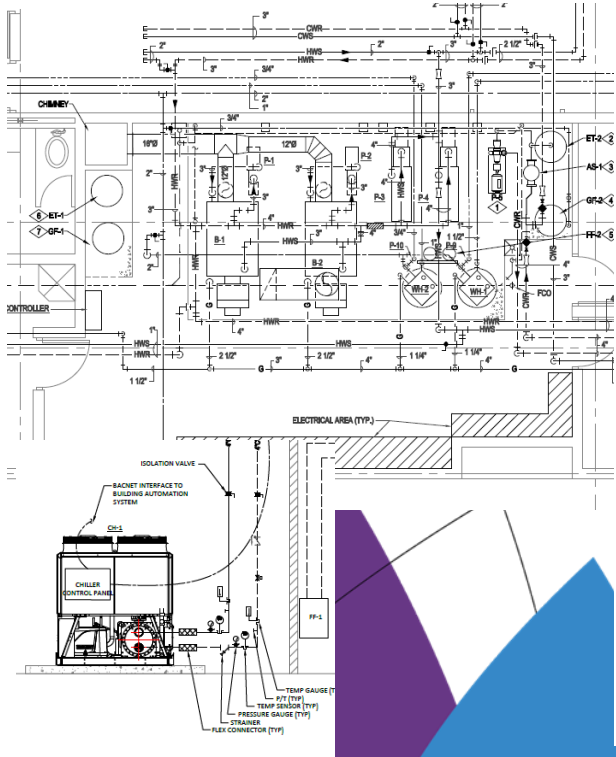
ENLARGED MECHANICAL ROOM NEW WORK PLAN

SCALE: 1/4" = 1'-0"

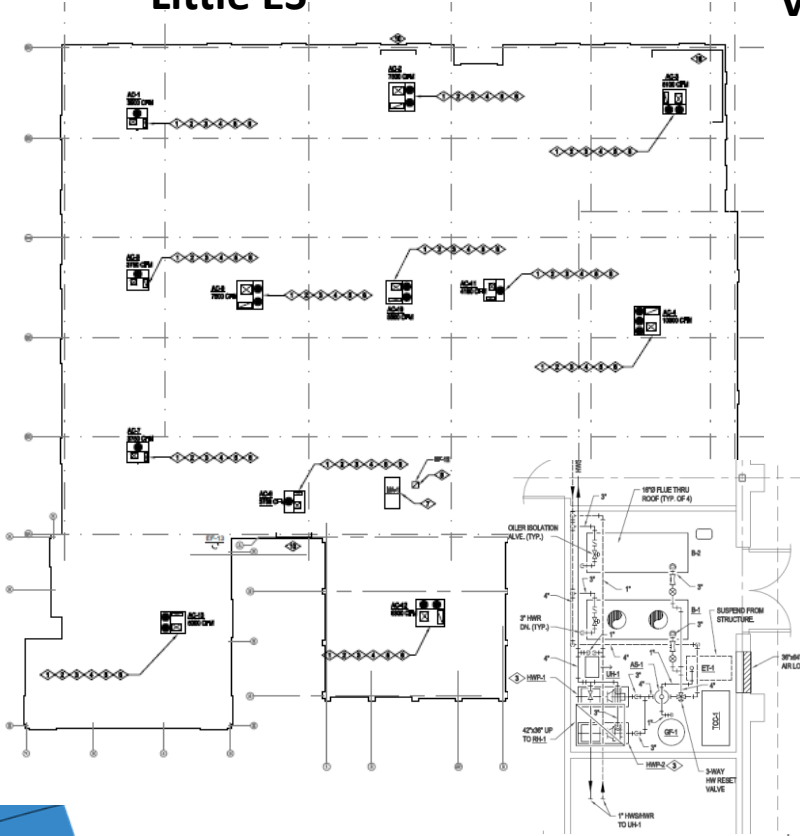
DW Mechanical 2022 Campbell ES, Little ES & Van Arsdale ES

Columbine Engineering – US Engineering

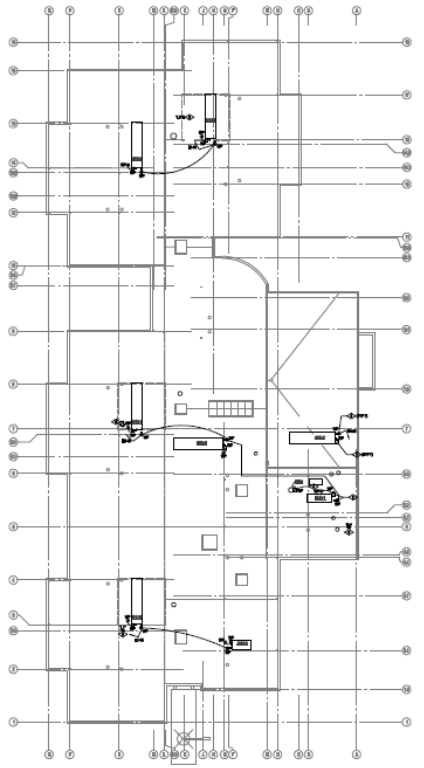
Campbell ES



Little ES



Van Arsdale ES



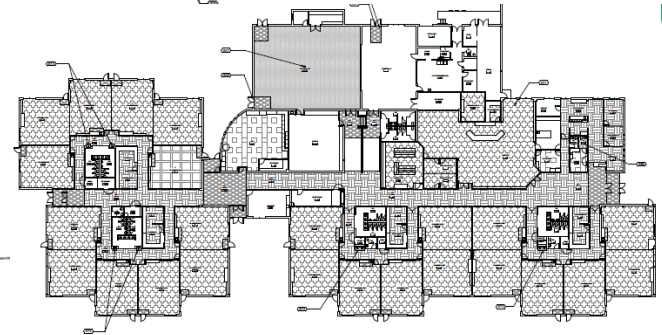
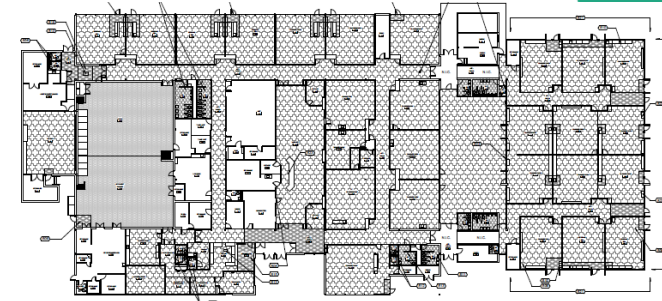
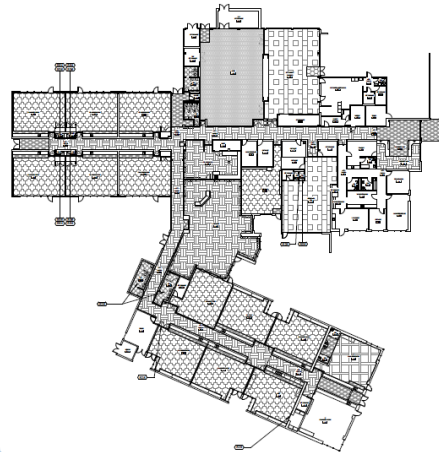
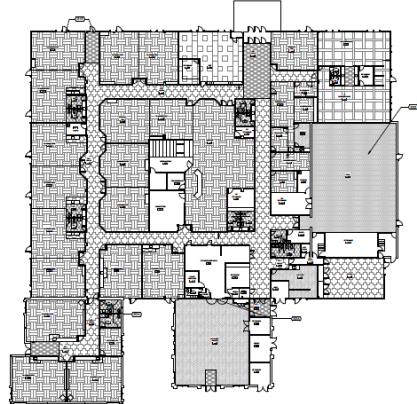
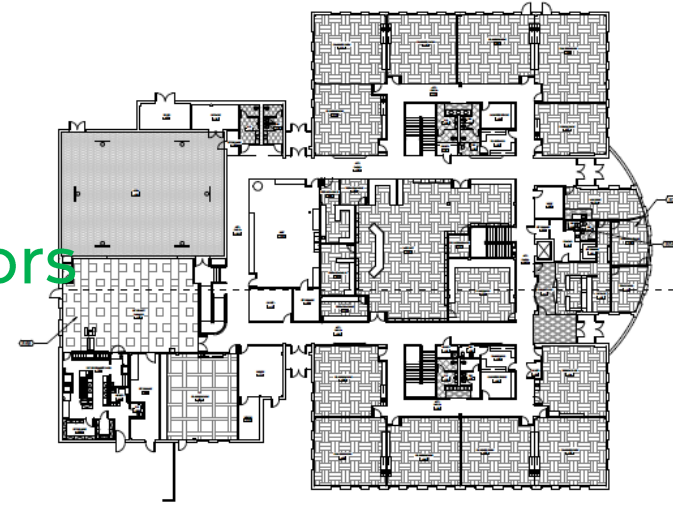
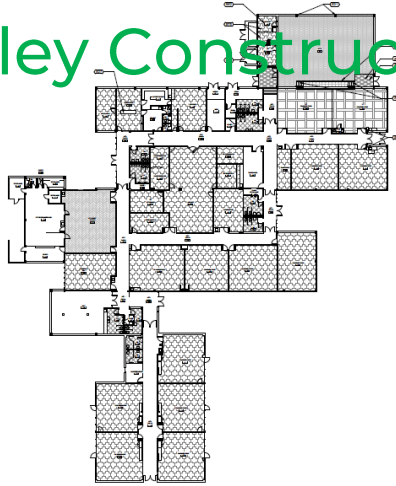
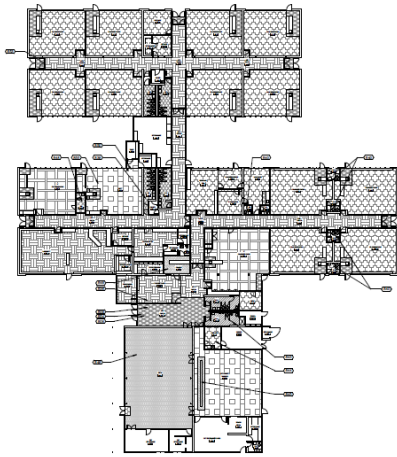
DW – Flooring II

Glennon Heights ES, Little ES, Parr ES

Pennington ES, S Lakewood ES

Swanson ES, Van Arsdale ES

studitrope – McCauley Constructors



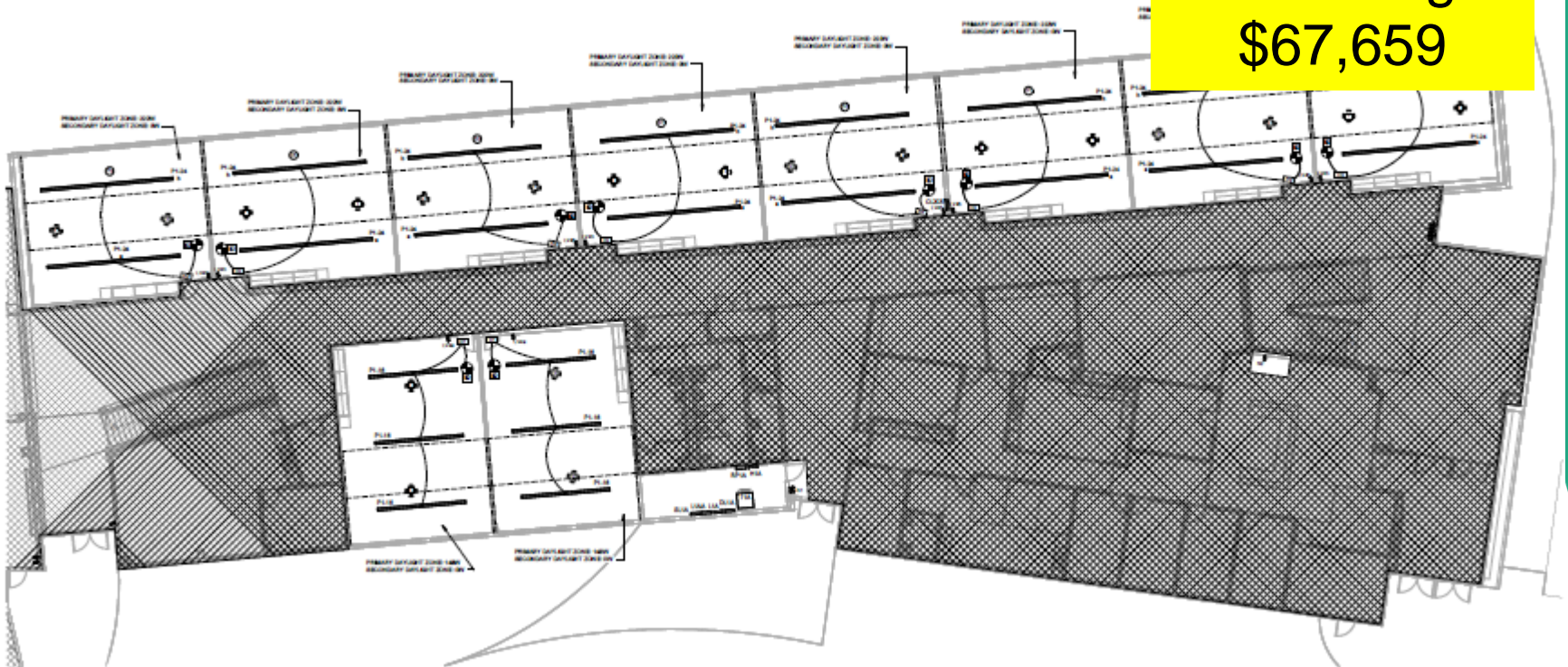
Efficiency Future Ready Golden HS

H&M – Singletrack

Construction

Bid \$432,659

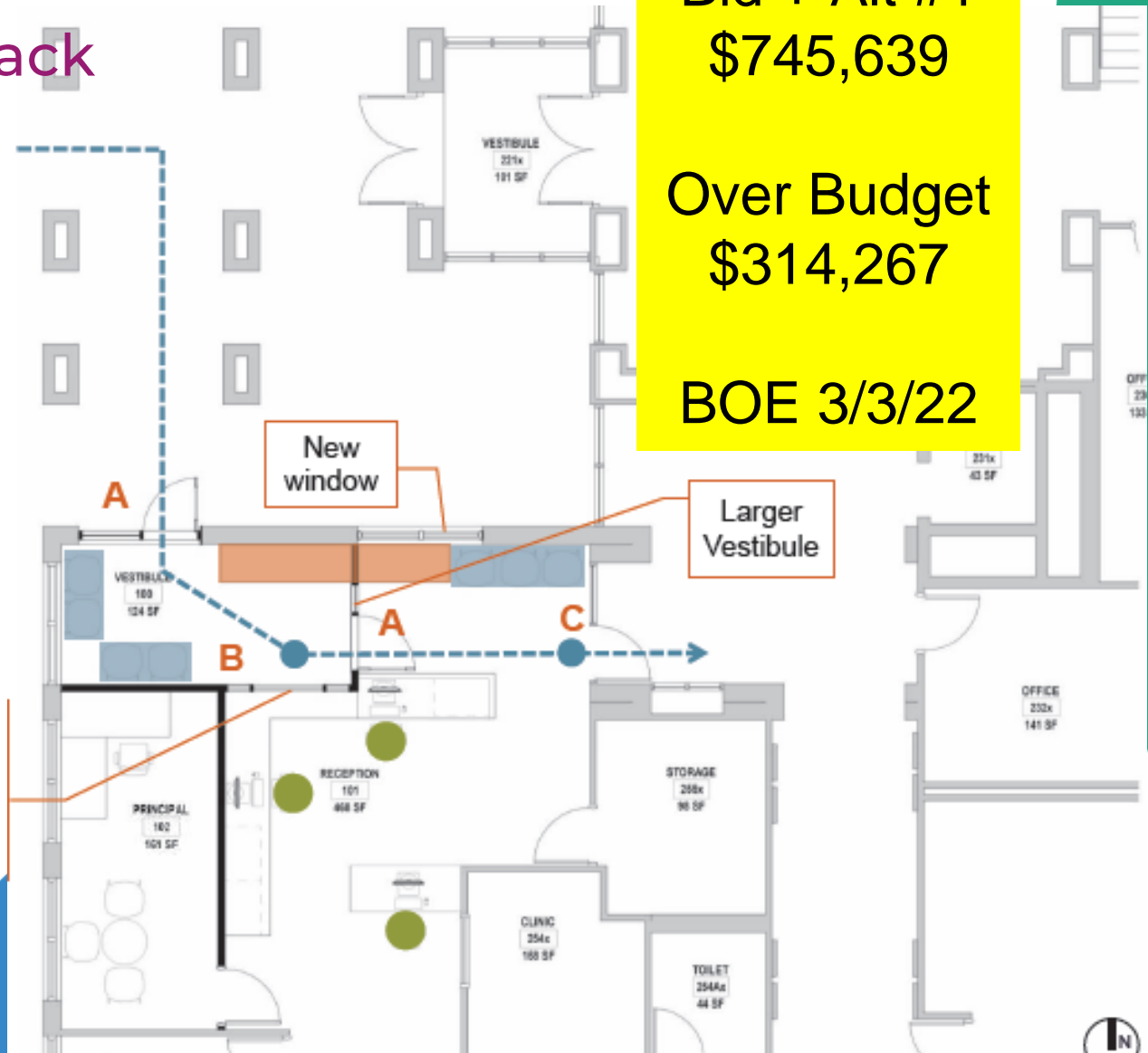
Over Budget
\$67,659



Efficiency Future Ready Mitchell ES

H&M – Singletrack

Construction
Bid + Alt #1
\$745,639
Over Budget
\$314,267
BOE 3/3/22



Efficiency Future Ready Elk Creek ES

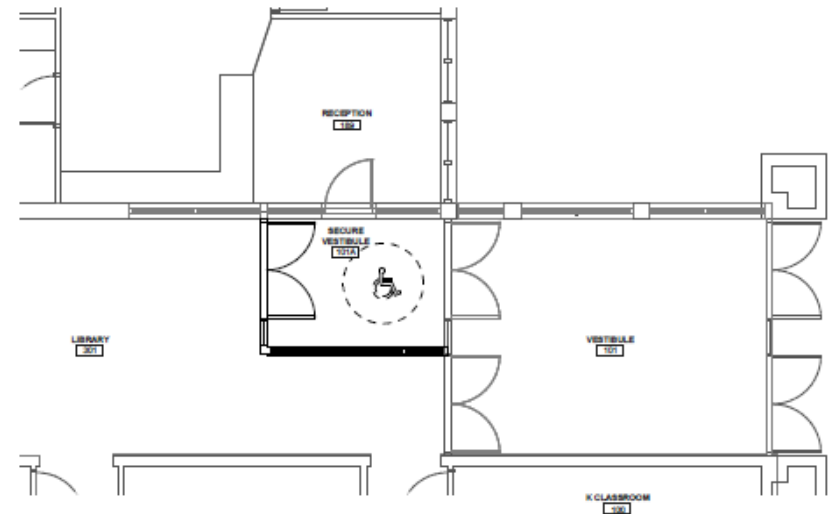
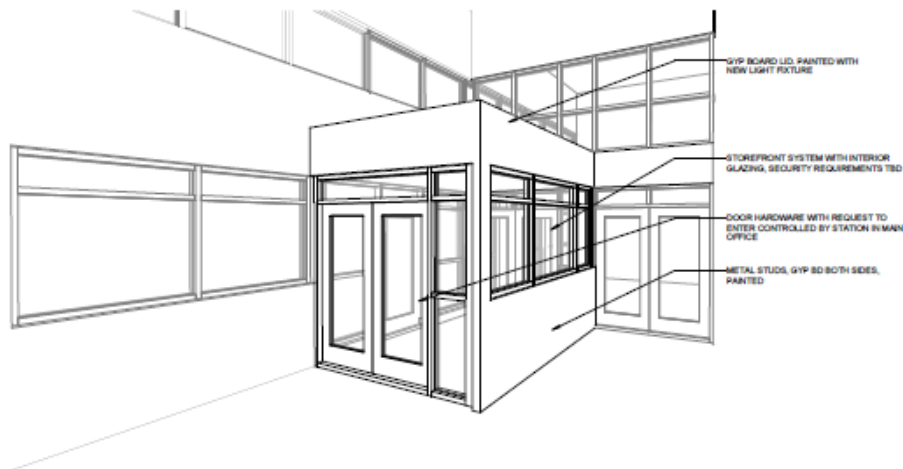
BVH – SCS

Construction

Bid + Alt #1,2
\$588,000

Over Budget
\$139,523

BOE 3/3/22



3 VESTIBULE PERSPECTIVE - FOR REFERENCE ONLY

1 ENLARGED VESTIBULE PLAN
1/4" = 1'-0"

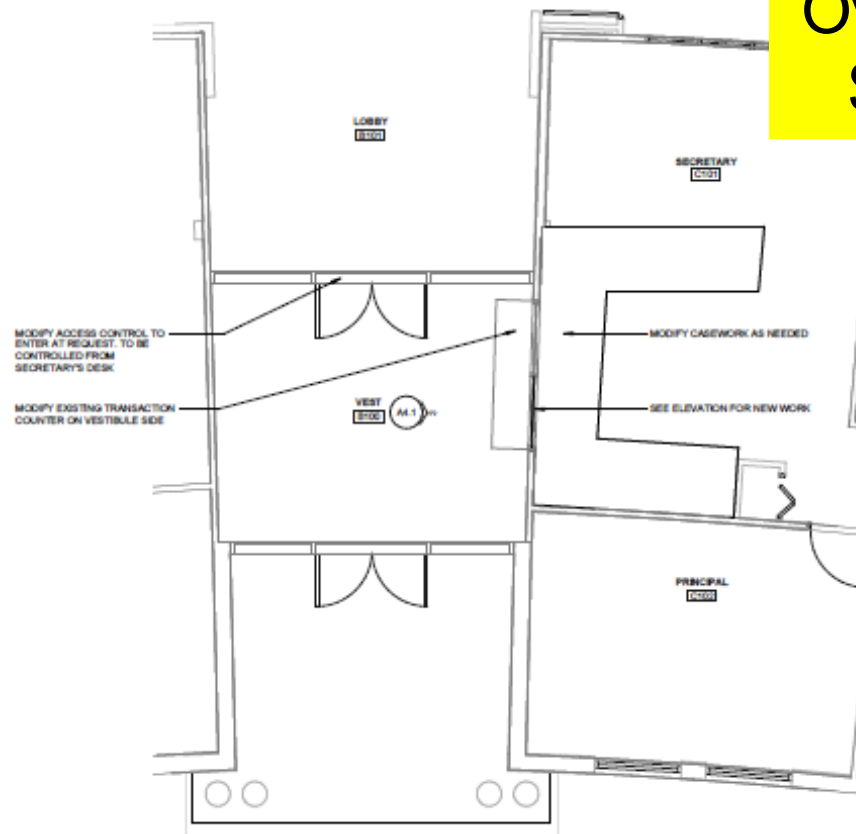
Efficiency Future Ready West Jefferson ES

BVH – Bryan

Construction

Bid + Alt #1
\$305,327

Over Budget
\$179,619



1 ENLARGED VESTIBULE PLAN
1/4" = 1'-0"

Efficiency Future Ready Emory ES

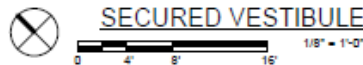
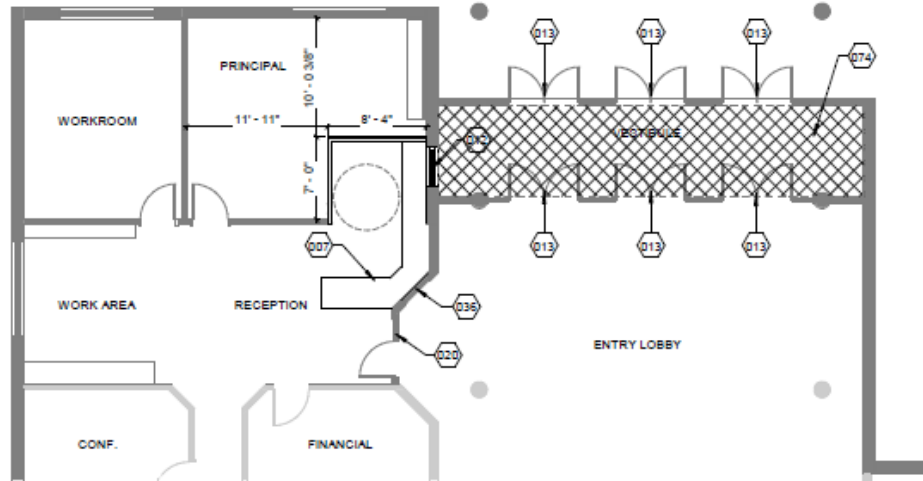
Treanor HL- Crossland

Construction

Base Bid
\$1,884,083

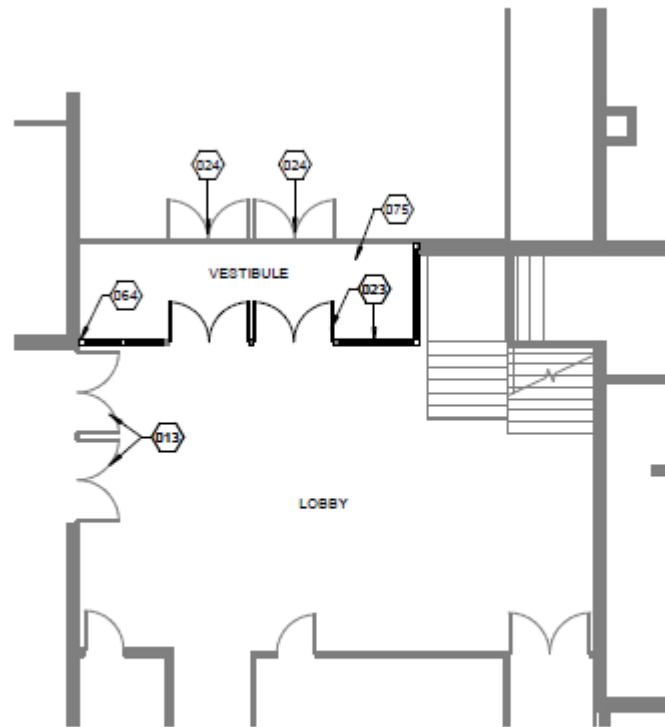
Over Budget
\$79,211

BOE 3/3/22



Efficiency Future Ready Red Rocks ES

Treanor HL- Crossland



SECURED VESTIBULE



Construction

Base Bid +
Alt #3,4,5
\$949,868

Over Budget
\$13,899

BOE 3/3/22

Efficiency Future Ready Lakewood HS

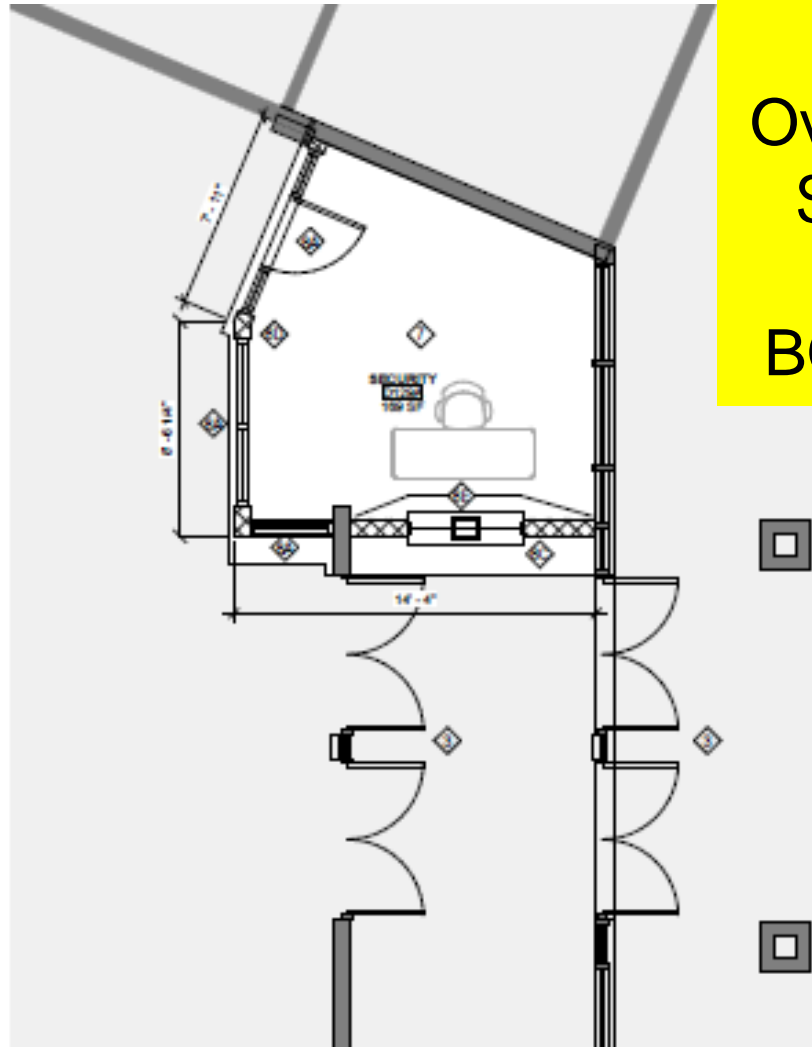
HCM – AD Miller

Construction

Base Bid
\$1,719,000

Over Budget
\$126,976

BOE 3/3/22



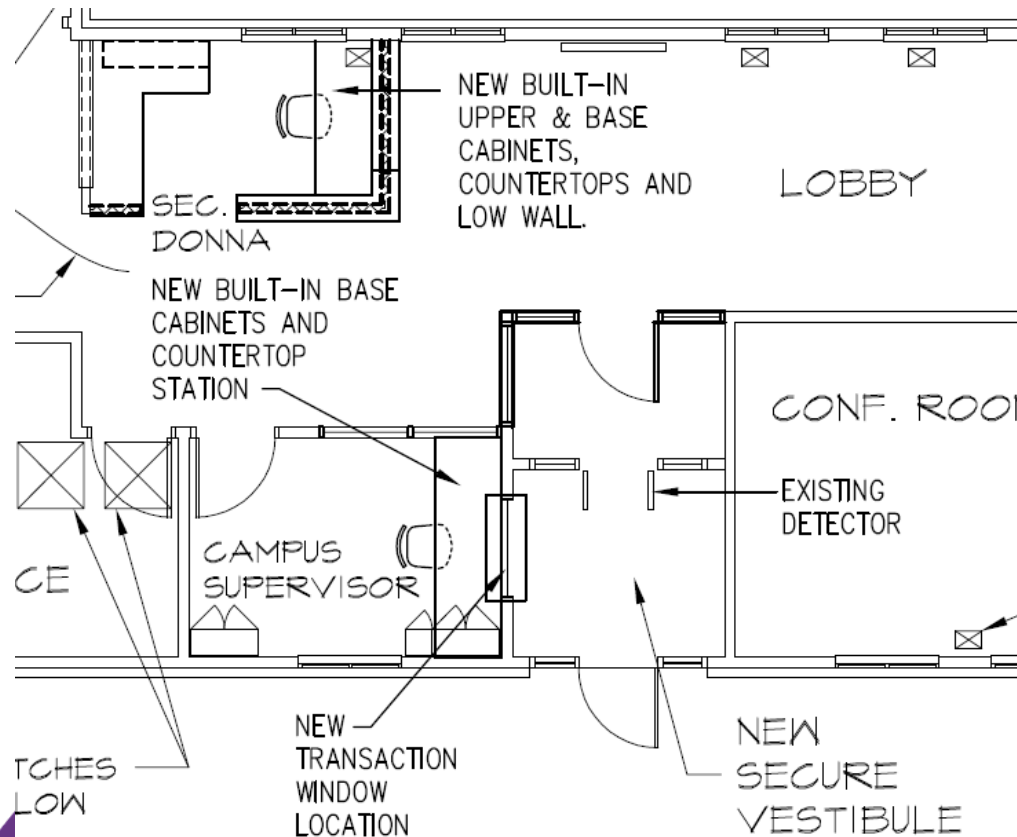
Efficiency Future Ready Longview HS

Mellin & Associates – Singletrack

Construction

Base Bid
\$279,180

Over Budget
\$90,107



Efficiency Future Ready Shelton ES

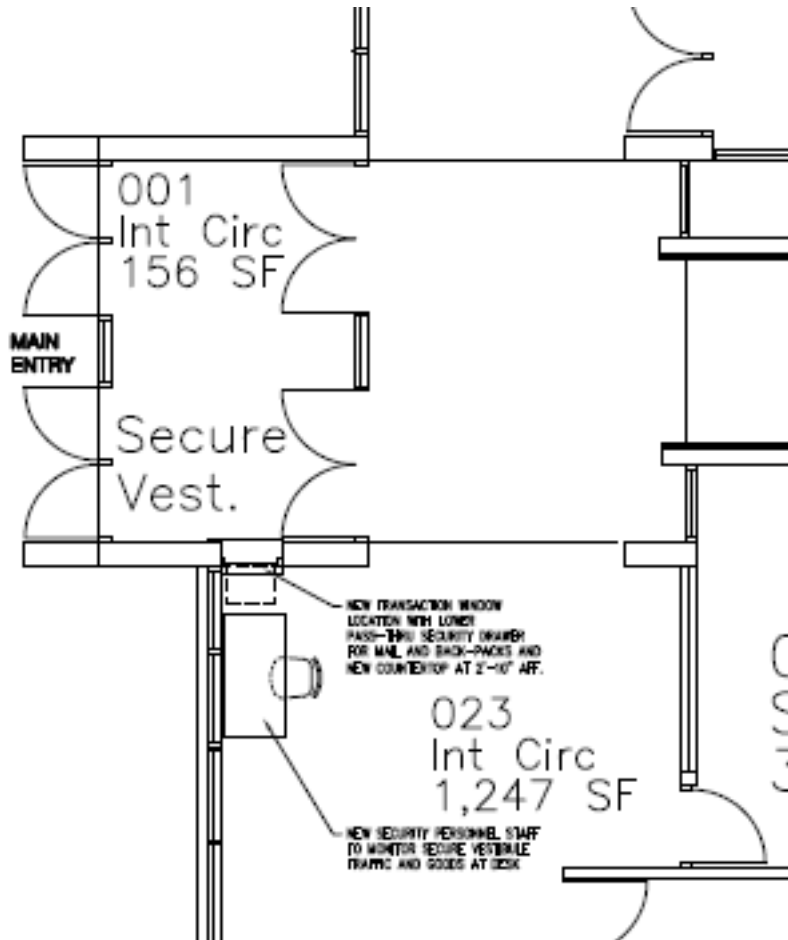
Mellin & Associates – Himmelman

Construction

Base + Alt #3
\$1,061,500

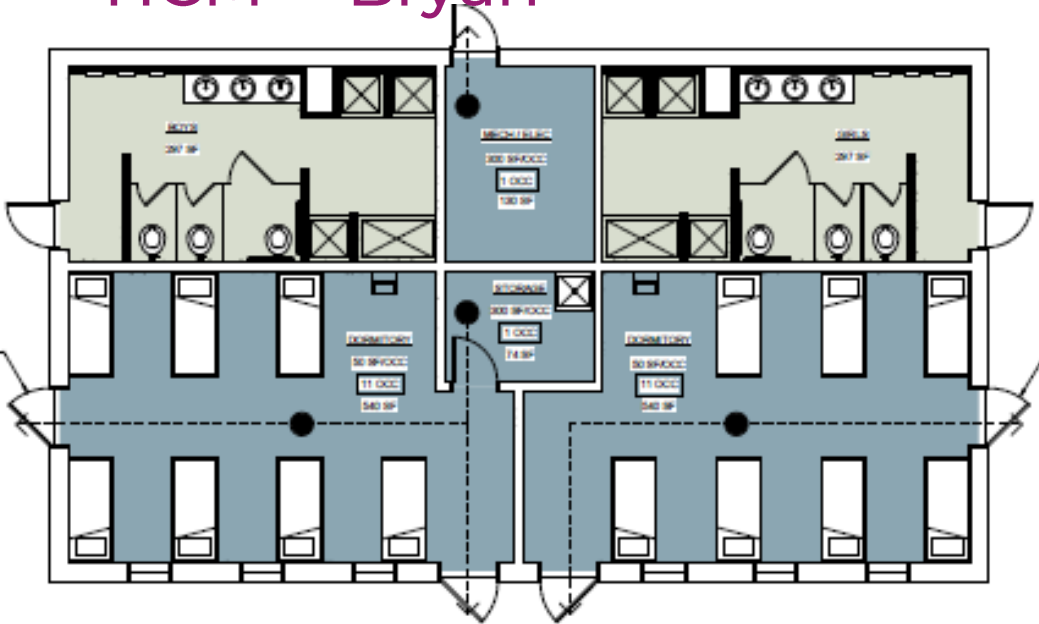
Over Budget
\$51,022

BOE 3/3/22



Efficiency Future Ready Windy Peak OEL

HCM – Bryan



Construction
Base Bid
\$2,358,000
Under Budget
\$250,981
BOE 3/3/22



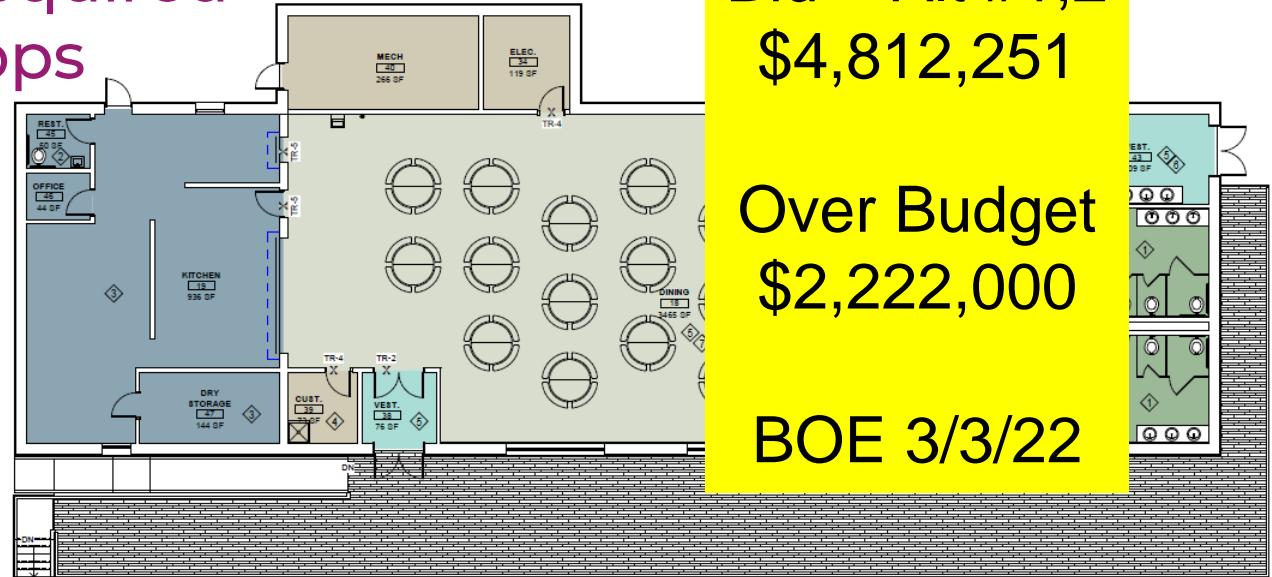
Efficiency Future Ready
Mount Evans OEL
CAAC - Vote Required
HCM – GH Phipps

Construction

Bid + Alt #1,2
\$4,812,251

Over Budget
\$2,222,000

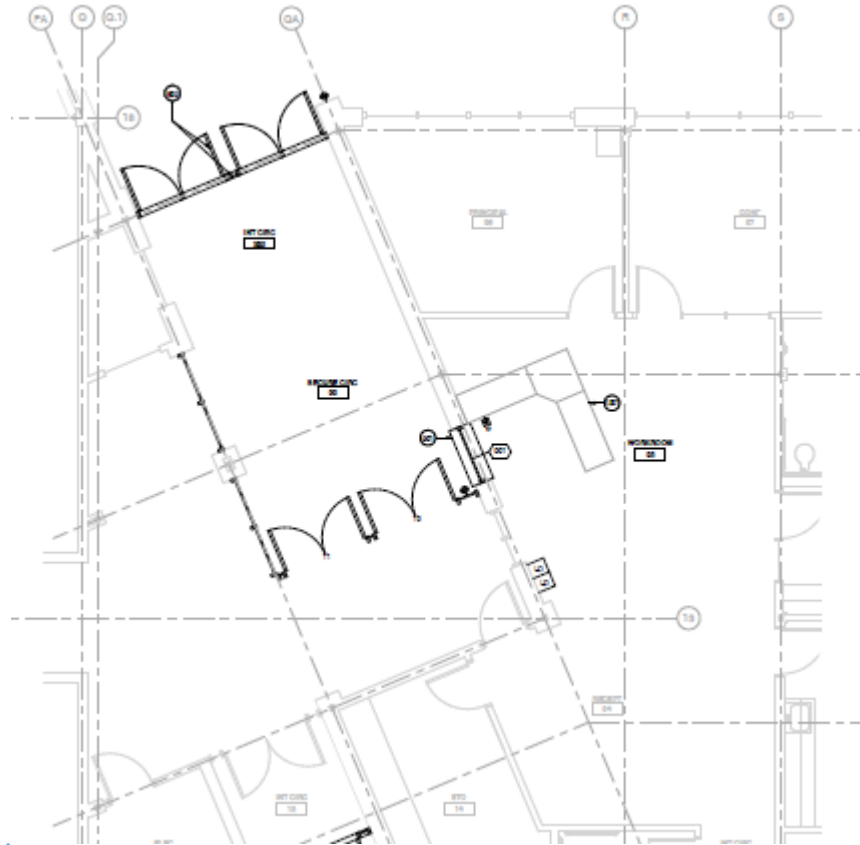
BOE 3/3/22



Efficiency Future Ready Green Mountain ES

Construction
Documents
Bids 2/17/22

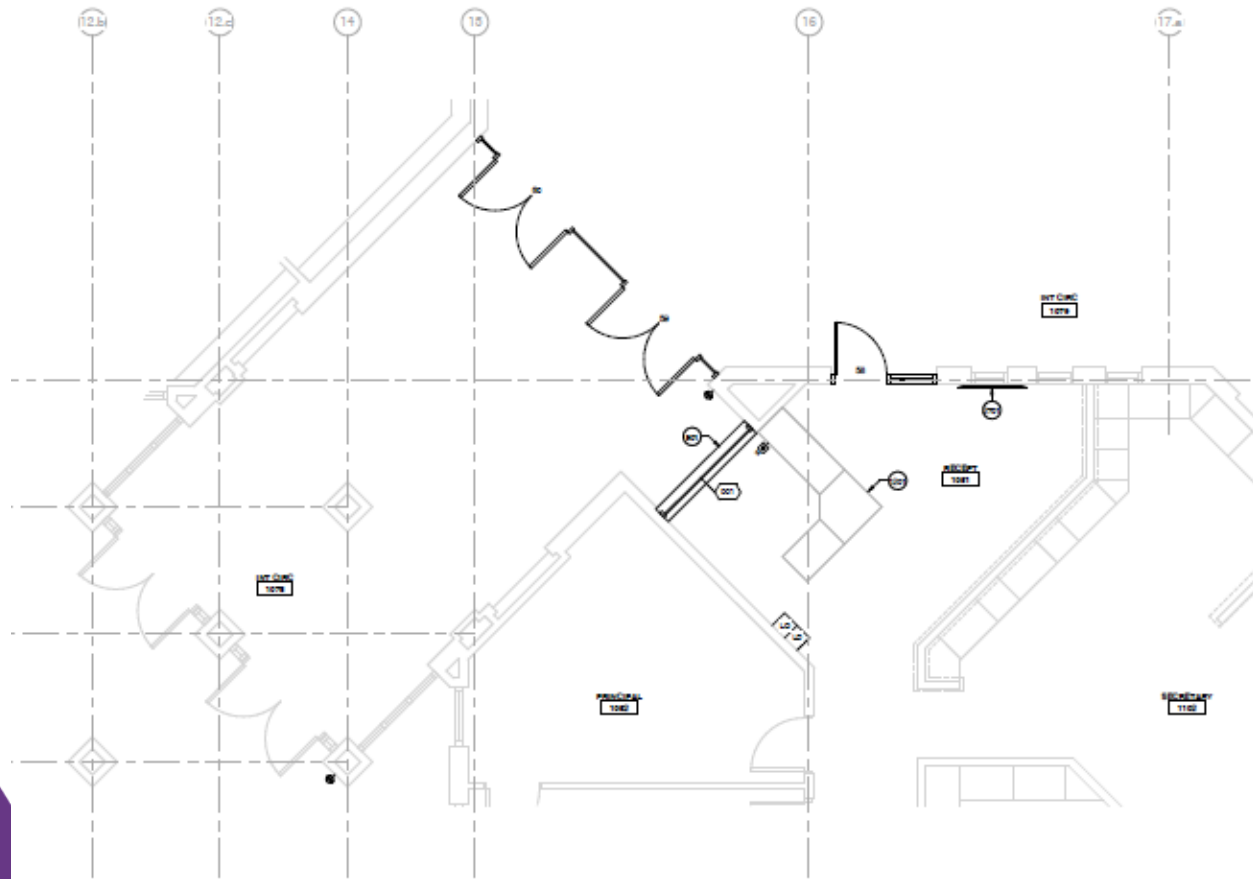
AMD – TBD



Efficiency Future Ready Stevens ES

Construction
Documents
Bids 2/17/22

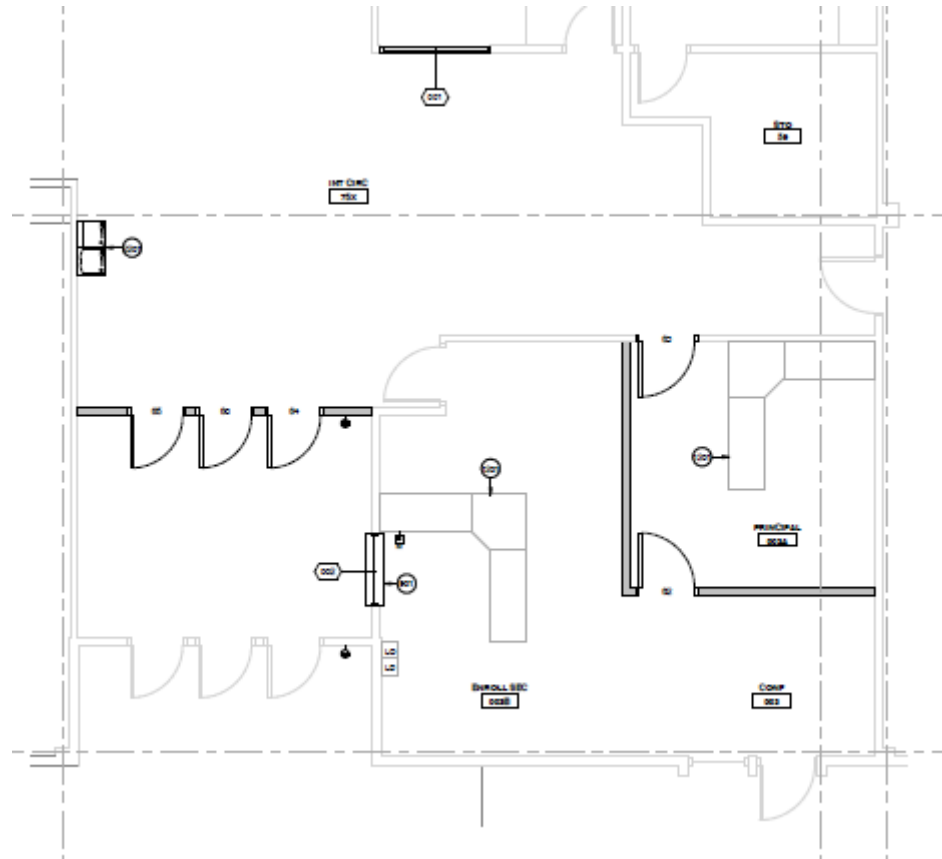
AMD – TBD



Efficiency Future Ready Thomson ES

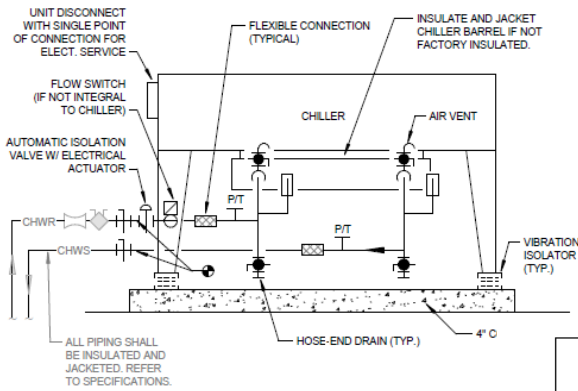
Construction
Documents
Bids 2/17/22

AMD – TBD



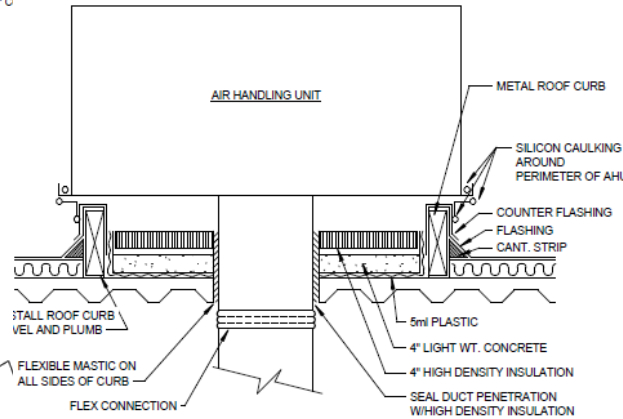
HVAC & Lighting Fairmount ES

Cator Ruma – TBD



AIR COOLED CHILLER DETAIL

SCALE: NONE



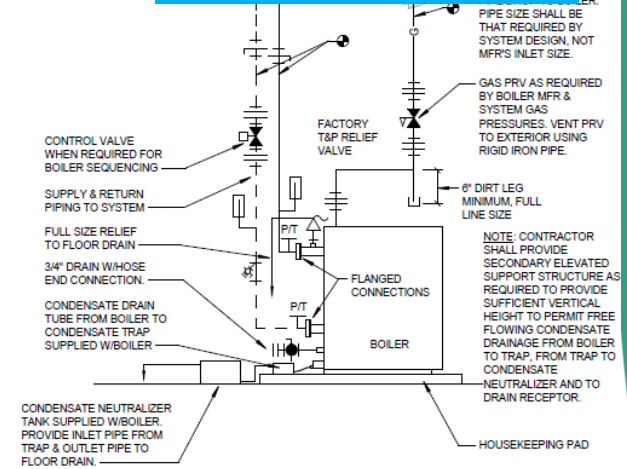
NOTE:
ROOF CURB AND FLASHING SHALL BE INSTALLED BY THE NATIONAL ROOFING CONTRACTORS ASSOC. RECOMMENDATIONS AND DETAILS.

ROOF MOUNTED AHU SUPPORT AND ISOLATION DETAIL

SCALE: NONE

7443-02

Bids
BOE 2/18/22



CONDENSING BOILER PIPING DETAIL

SCALE: NONE

5200-01

AIR HANDLING UNIT (DX) SCHEDULE

COLUMN HEADING NOTES:
NOTE AA: THESE VALUES REFLECT THE EXPECTED OPERATIONAL CONDITIONS AT INITIAL START-UP (FOR INFORMATION ONLY.) ACTUAL VALUES SHALL BE DETERMINED BY TESTING & BALANCING.
NOTE AB: COIL FLOW IS ACTUAL FLOW THROUGH COIL. SYSTEM FLOW IS THE FLOW THROUGH THE CONTROL VALVE. THESE MAY BE DIFFERENT FOR PUMPED COILS.

DESIG.		AREA SERVED	MFR	MODEL NO.	OUTDOOR OR INDOOR CASING	OUTSIDE AIR CFM MIN.	AT ELEV			CONFIG		
NAME	NO.						CFM	ESP (IN WC)	TSP (IN WC)	NO. OF FANS	FANS/ROW	ROWS HIGH
AHU	1	AAON	RNA-031	OUTDOOR	2,875	11,865	1.30	0.00	0	0	0	
AHU	2	AAON	RN-013	OUTDOOR	1,500	5,255	1.50	0.00	0	0	0	
AHU	6	AAON	RN-007	OUTDOOR	320	2,530	1.50	0.00	0	0	0	
AHU	8	AAON	RNA-016	OUTDOOR	1,685	6,280	1.60	0.00	0	0	0	
AHU	9	AAON	RNA-011	OUTDOOR	1,395	4,950	1.60	0.00	0	0	0	
AHU	10	AAON	RNA-013	OUTDOOR	1,510	5,815	1.50	0.00	0	0	0	
AHU	11	AAON	RNA-011	OUTDOOR	1,075	4,920	1.60	0.00	0	0	0	

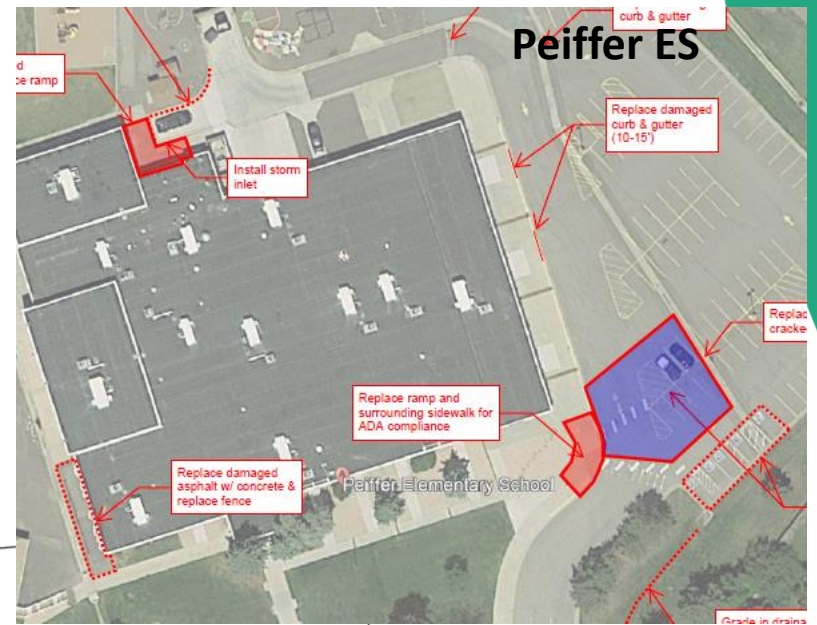
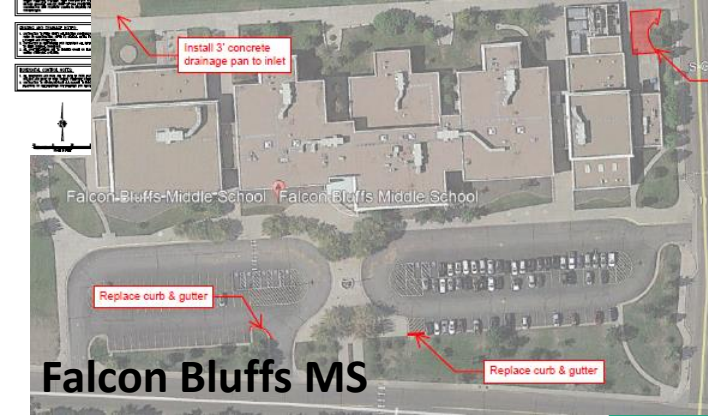
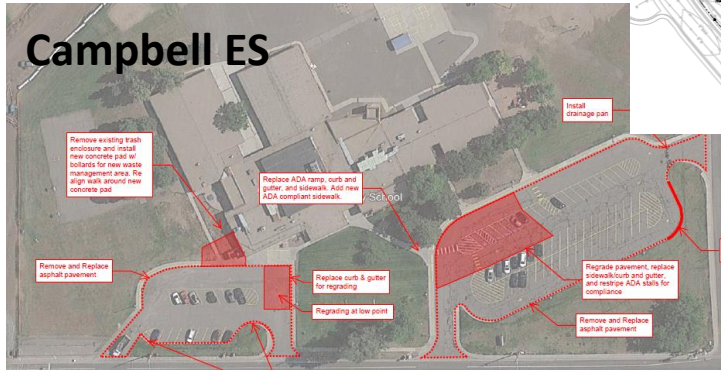
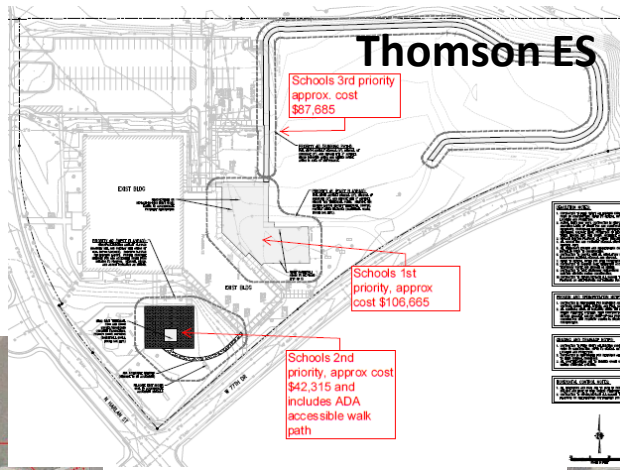
DW – Flooring I
Dear Creek MS, Falcon Bluffs MS,
Summit Ridge MS, Peiffer ES,
*Governor's Ranch ES, Mt Carbon ES,
Rooney Ranch ES*
AMD – SCS Construction (3 Gym Floors)

Construction
Documents
Bids 2/24/22



DW Paving 2022 JVA – TBD

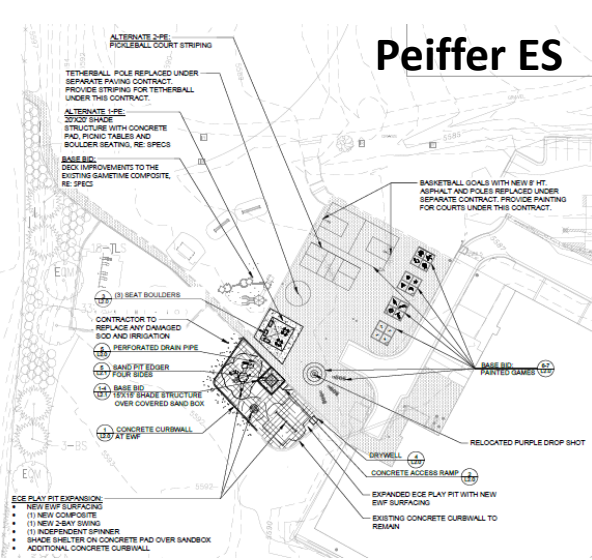
Construction Documents Bids 3/9/22



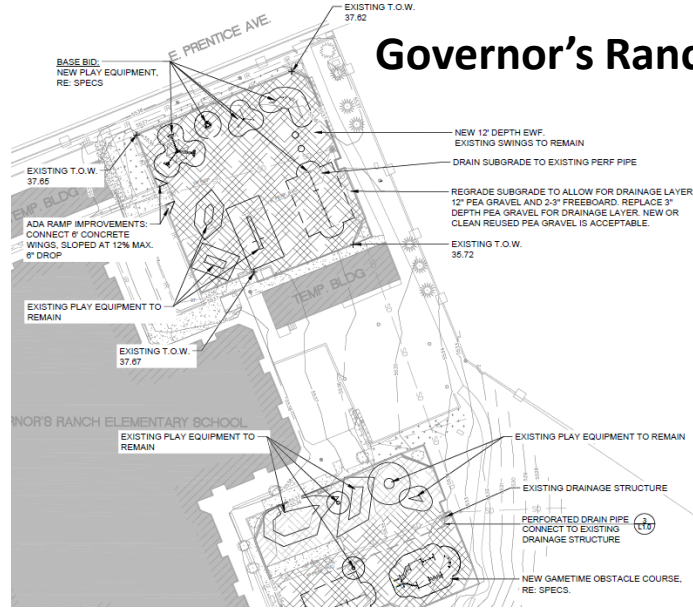
DW Playgrounds I 2022 Design Concepts – TBD

Construction Documents Bids 3/2

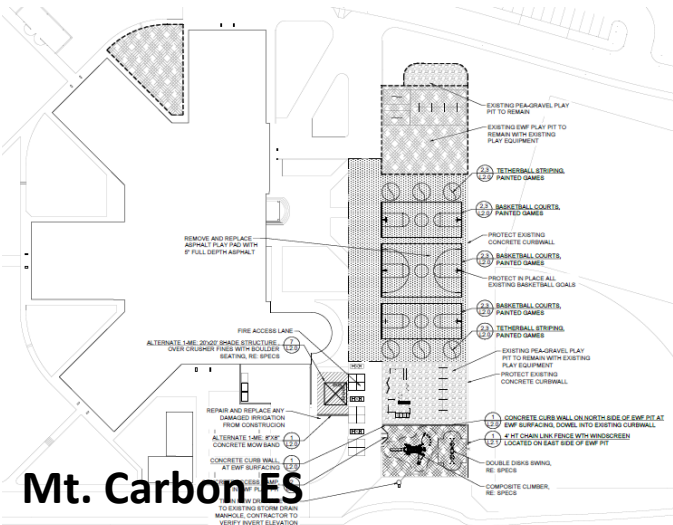
Peiffer ES



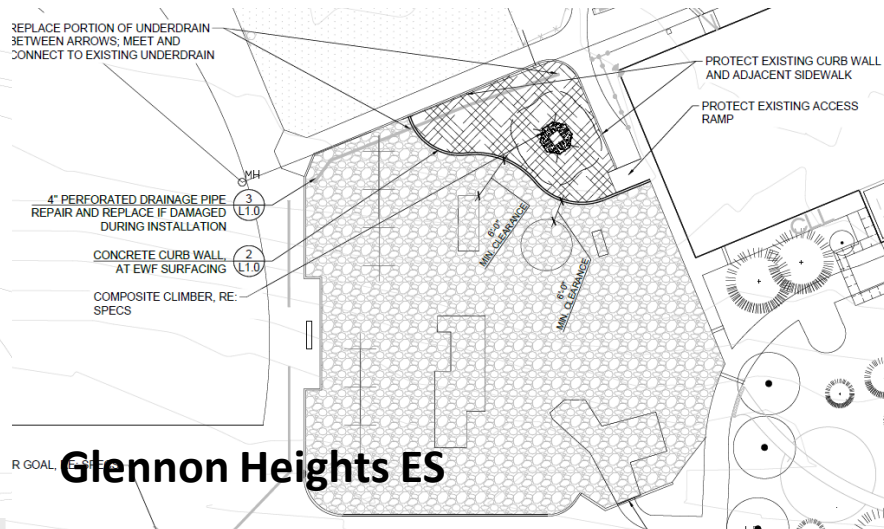
Governor's Ranch ES



Mt. Carbon ES



Glennon Heights ES



DW Playgrounds II 2022 Lime Green – TBD

Construction Documents Bids 3/2

Confirm location of ADA HC ramp

GENERAL NOTES

1. VERIFY ALL DIMENSIONS AND LOCATIONS OF ALL EXISTING AND PROPOSED EQUIPMENT AND SURFACES.
2. VERIFY ALL DIMENSIONS AND LOCATIONS OF ALL EXISTING AND PROPOSED EQUIPMENT AND SURFACES.
3. VERIFY ALL DIMENSIONS AND LOCATIONS OF ALL EXISTING AND PROPOSED EQUIPMENT AND SURFACES.
4. VERIFY ALL DIMENSIONS AND LOCATIONS OF ALL EXISTING AND PROPOSED EQUIPMENT AND SURFACES.
5. VERIFY ALL DIMENSIONS AND LOCATIONS OF ALL EXISTING AND PROPOSED EQUIPMENT AND SURFACES.
6. VERIFY ALL DIMENSIONS AND LOCATIONS OF ALL EXISTING AND PROPOSED EQUIPMENT AND SURFACES.
7. VERIFY ALL DIMENSIONS AND LOCATIONS OF ALL EXISTING AND PROPOSED EQUIPMENT AND SURFACES.
8. VERIFY ALL DIMENSIONS AND LOCATIONS OF ALL EXISTING AND PROPOSED EQUIPMENT AND SURFACES.
9. VERIFY ALL DIMENSIONS AND LOCATIONS OF ALL EXISTING AND PROPOSED EQUIPMENT AND SURFACES.
10. VERIFY ALL DIMENSIONS AND LOCATIONS OF ALL EXISTING AND PROPOSED EQUIPMENT AND SURFACES.

KEY NOTES

1. VERIFY ALL DIMENSIONS AND LOCATIONS OF ALL EXISTING AND PROPOSED EQUIPMENT AND SURFACES.
2. VERIFY ALL DIMENSIONS AND LOCATIONS OF ALL EXISTING AND PROPOSED EQUIPMENT AND SURFACES.
3. VERIFY ALL DIMENSIONS AND LOCATIONS OF ALL EXISTING AND PROPOSED EQUIPMENT AND SURFACES.
4. VERIFY ALL DIMENSIONS AND LOCATIONS OF ALL EXISTING AND PROPOSED EQUIPMENT AND SURFACES.
5. VERIFY ALL DIMENSIONS AND LOCATIONS OF ALL EXISTING AND PROPOSED EQUIPMENT AND SURFACES.
6. VERIFY ALL DIMENSIONS AND LOCATIONS OF ALL EXISTING AND PROPOSED EQUIPMENT AND SURFACES.
7. VERIFY ALL DIMENSIONS AND LOCATIONS OF ALL EXISTING AND PROPOSED EQUIPMENT AND SURFACES.
8. VERIFY ALL DIMENSIONS AND LOCATIONS OF ALL EXISTING AND PROPOSED EQUIPMENT AND SURFACES.
9. VERIFY ALL DIMENSIONS AND LOCATIONS OF ALL EXISTING AND PROPOSED EQUIPMENT AND SURFACES.
10. VERIFY ALL DIMENSIONS AND LOCATIONS OF ALL EXISTING AND PROPOSED EQUIPMENT AND SURFACES.

SYMBOL LEGEND

JEFFCO PUBLIC SCHOOLS
CAMPBELL ELEMENTARY
PLAYGROUND IMPROVEMENTS
1500 Oak Street, Aurora, CO 80012

PROJECT NO. 150001
DATE: 10/2021
DRAWN BY: JAC
CHECKED BY: JAC
APPROVED BY: JAC

Campbell ES

GENERAL NOTES

1. VERIFY ALL DIMENSIONS AND LOCATIONS OF ALL EXISTING AND PROPOSED EQUIPMENT AND SURFACES.
2. VERIFY ALL DIMENSIONS AND LOCATIONS OF ALL EXISTING AND PROPOSED EQUIPMENT AND SURFACES.
3. VERIFY ALL DIMENSIONS AND LOCATIONS OF ALL EXISTING AND PROPOSED EQUIPMENT AND SURFACES.
4. VERIFY ALL DIMENSIONS AND LOCATIONS OF ALL EXISTING AND PROPOSED EQUIPMENT AND SURFACES.
5. VERIFY ALL DIMENSIONS AND LOCATIONS OF ALL EXISTING AND PROPOSED EQUIPMENT AND SURFACES.
6. VERIFY ALL DIMENSIONS AND LOCATIONS OF ALL EXISTING AND PROPOSED EQUIPMENT AND SURFACES.
7. VERIFY ALL DIMENSIONS AND LOCATIONS OF ALL EXISTING AND PROPOSED EQUIPMENT AND SURFACES.
8. VERIFY ALL DIMENSIONS AND LOCATIONS OF ALL EXISTING AND PROPOSED EQUIPMENT AND SURFACES.
9. VERIFY ALL DIMENSIONS AND LOCATIONS OF ALL EXISTING AND PROPOSED EQUIPMENT AND SURFACES.
10. VERIFY ALL DIMENSIONS AND LOCATIONS OF ALL EXISTING AND PROPOSED EQUIPMENT AND SURFACES.

KEY NOTES

1. VERIFY ALL DIMENSIONS AND LOCATIONS OF ALL EXISTING AND PROPOSED EQUIPMENT AND SURFACES.
2. VERIFY ALL DIMENSIONS AND LOCATIONS OF ALL EXISTING AND PROPOSED EQUIPMENT AND SURFACES.
3. VERIFY ALL DIMENSIONS AND LOCATIONS OF ALL EXISTING AND PROPOSED EQUIPMENT AND SURFACES.
4. VERIFY ALL DIMENSIONS AND LOCATIONS OF ALL EXISTING AND PROPOSED EQUIPMENT AND SURFACES.
5. VERIFY ALL DIMENSIONS AND LOCATIONS OF ALL EXISTING AND PROPOSED EQUIPMENT AND SURFACES.
6. VERIFY ALL DIMENSIONS AND LOCATIONS OF ALL EXISTING AND PROPOSED EQUIPMENT AND SURFACES.
7. VERIFY ALL DIMENSIONS AND LOCATIONS OF ALL EXISTING AND PROPOSED EQUIPMENT AND SURFACES.
8. VERIFY ALL DIMENSIONS AND LOCATIONS OF ALL EXISTING AND PROPOSED EQUIPMENT AND SURFACES.
9. VERIFY ALL DIMENSIONS AND LOCATIONS OF ALL EXISTING AND PROPOSED EQUIPMENT AND SURFACES.
10. VERIFY ALL DIMENSIONS AND LOCATIONS OF ALL EXISTING AND PROPOSED EQUIPMENT AND SURFACES.

SYMBOL LEGEND

JEFFCO PUBLIC SCHOOLS
FAIRMOUNT ELEMENTARY
PLAYGROUND IMPROVEMENTS
15975 W. 50TH AVE., GOLDEN, CO 80403

PROJECT NO. 150001
DATE: 10/2021
DRAWN BY: JAC
CHECKED BY: JAC
APPROVED BY: JAC

Fairmount ES

DW LED 2022

Ackerman – CMGC McKinstry

Design Development



1. Lawrence ES
2. Brady
3. Bradford North
4. Bradford South
5. Ute Meadows ES
6. Leawood ES
7. Normandy ES
8. Rooney Ranch ES
9. Creighton MS
10. Moore MS
11. Weber ES
12. Meiklejohn
13. West Woods
14. Chatfield HS
15. Dakota Ridge HS

Security Glass Installation 11 - Schools

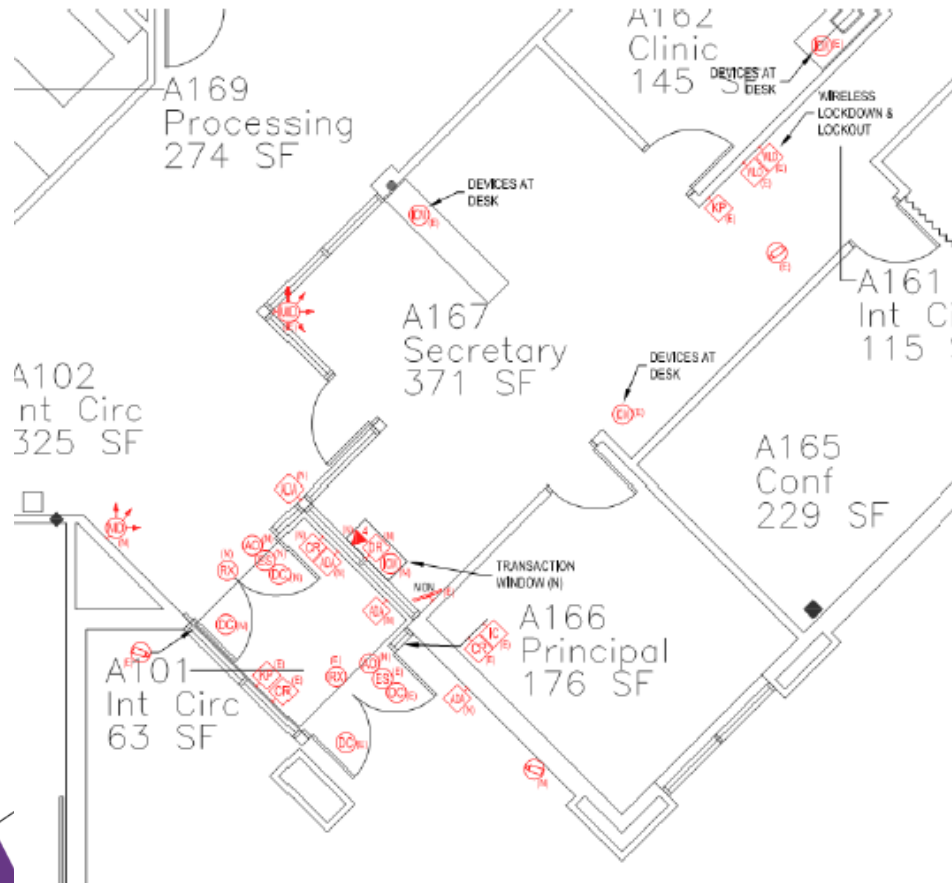
Swanson	Glennon Heights
Arvada West	S Lakewood
Canpbell	Little
Fairmount	Parr
Bear Creek K8	Pennington
Summit Ridge	



Efficiency Future Ready Mortensen ES

Design
Development
Bids 3/10/22

DLH – Contractor TBD

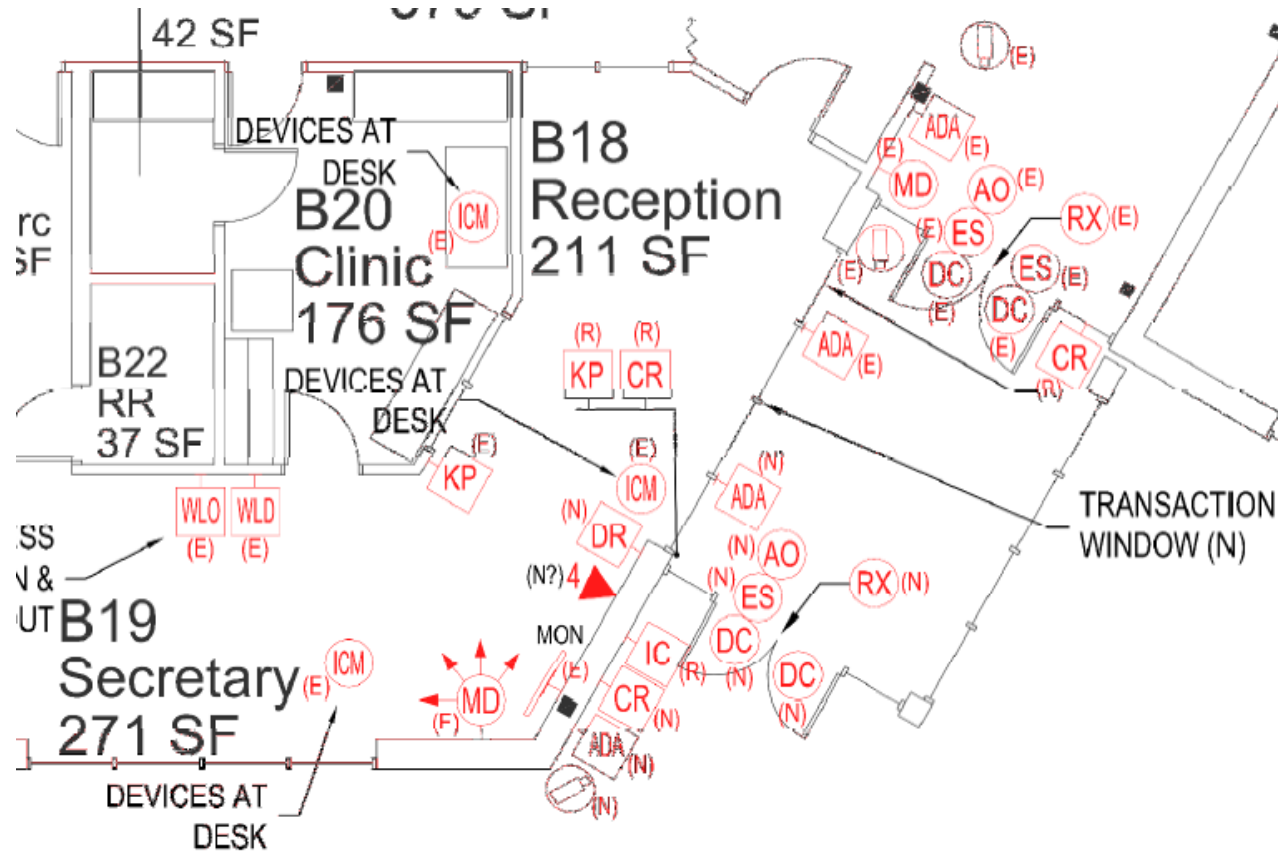


Secured Vestibule & Main Office Requirements

Efficiency Future Ready Shaffer ES

Design
Development
Bids 3/10/22

DLH – Contractor TBD

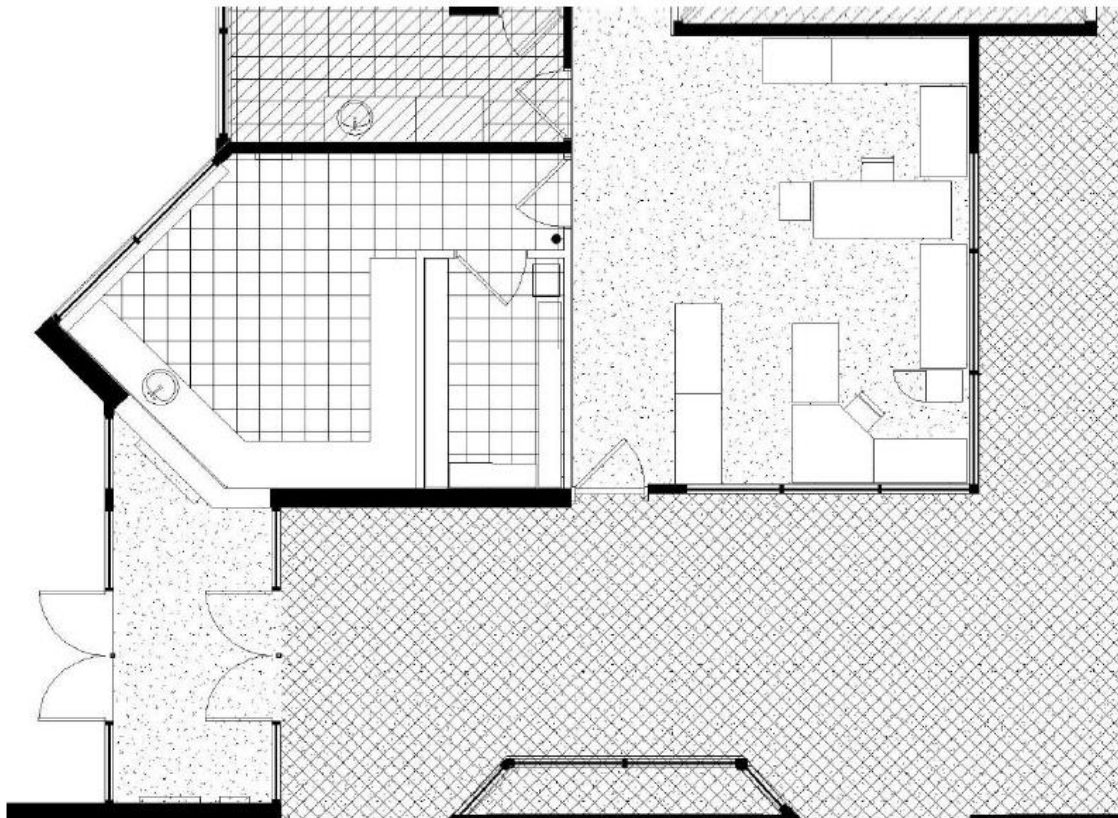


Secured Vestibule Requirements

Efficiency Future Ready Stony Creek ES

Construction
Documents
Bids 3/7/22

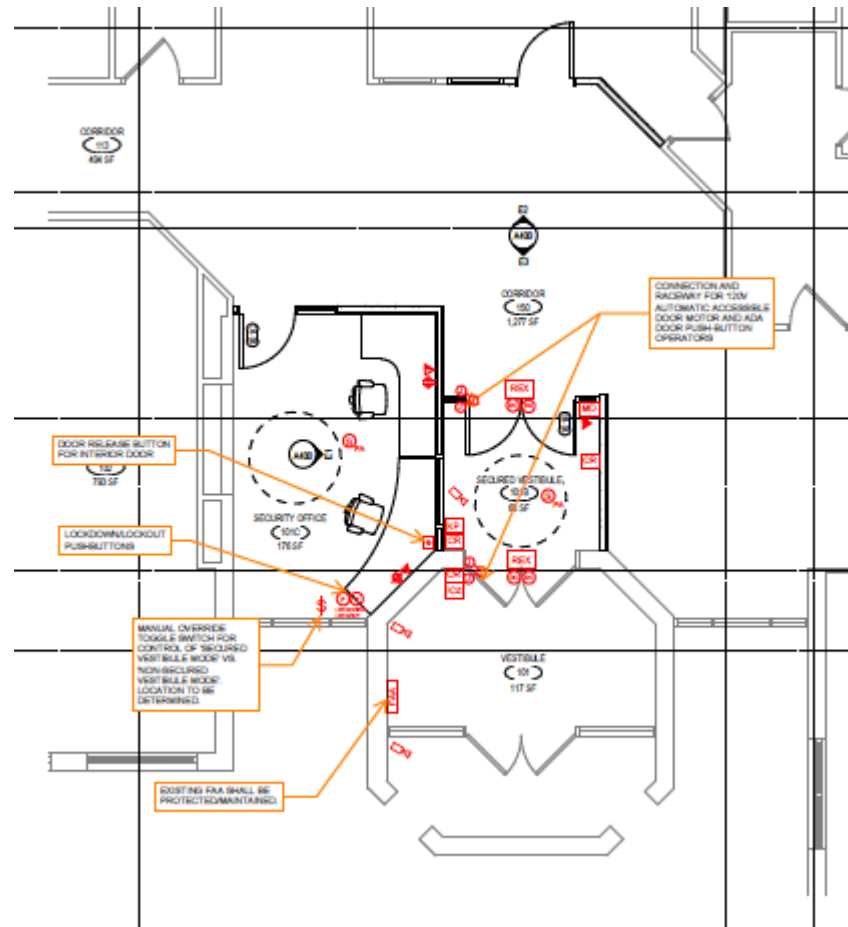
Jordin – Contractor TBD



Efficiency Future Ready Bergen Valley ES

Construction
Documents
Bids 3/15/22

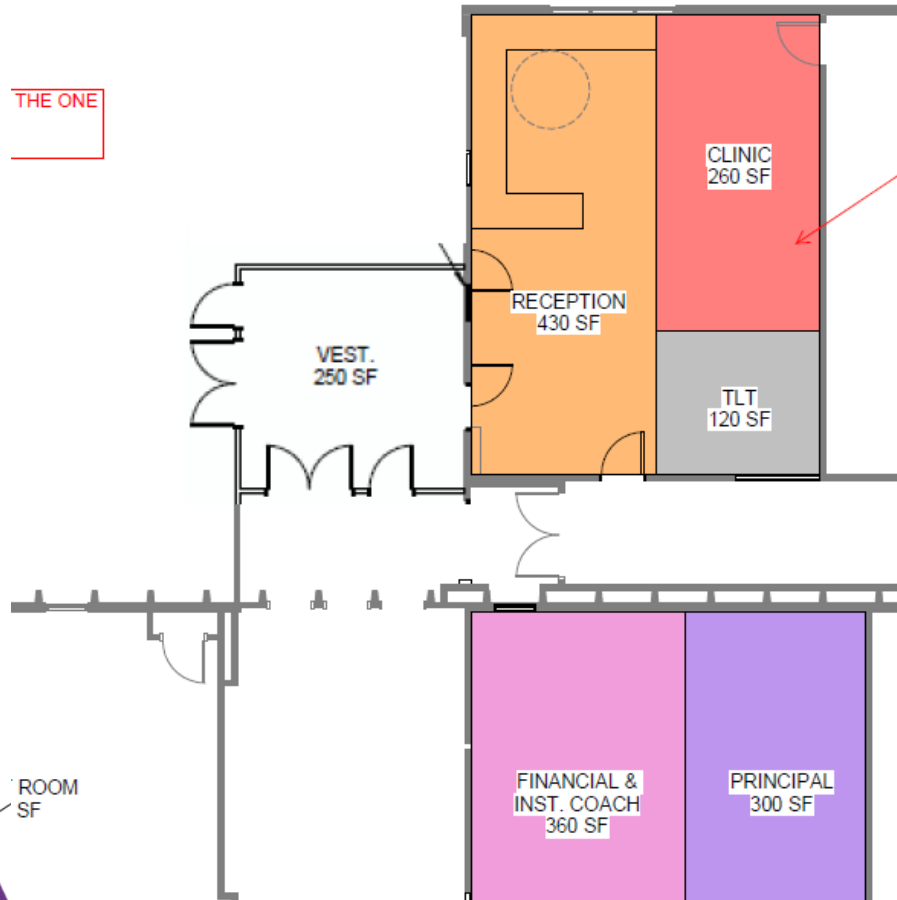
EUA – TBD



Efficiency Future Ready Westgate ES

Construction
Documents
Bids 3/22/22

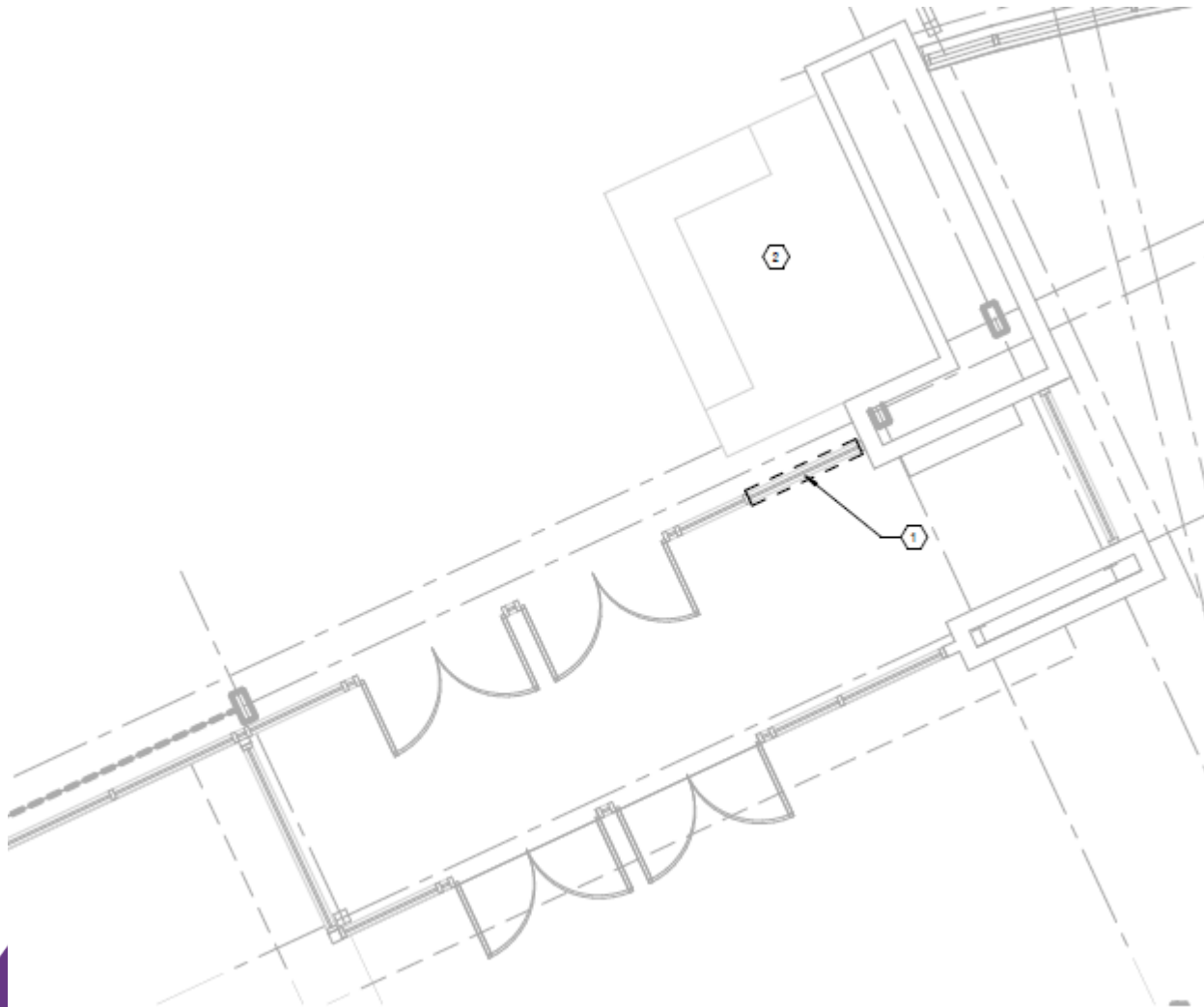
Treanor HL- TBD



Efficiency Future Ready Bear Creek HS

MOA – TBD

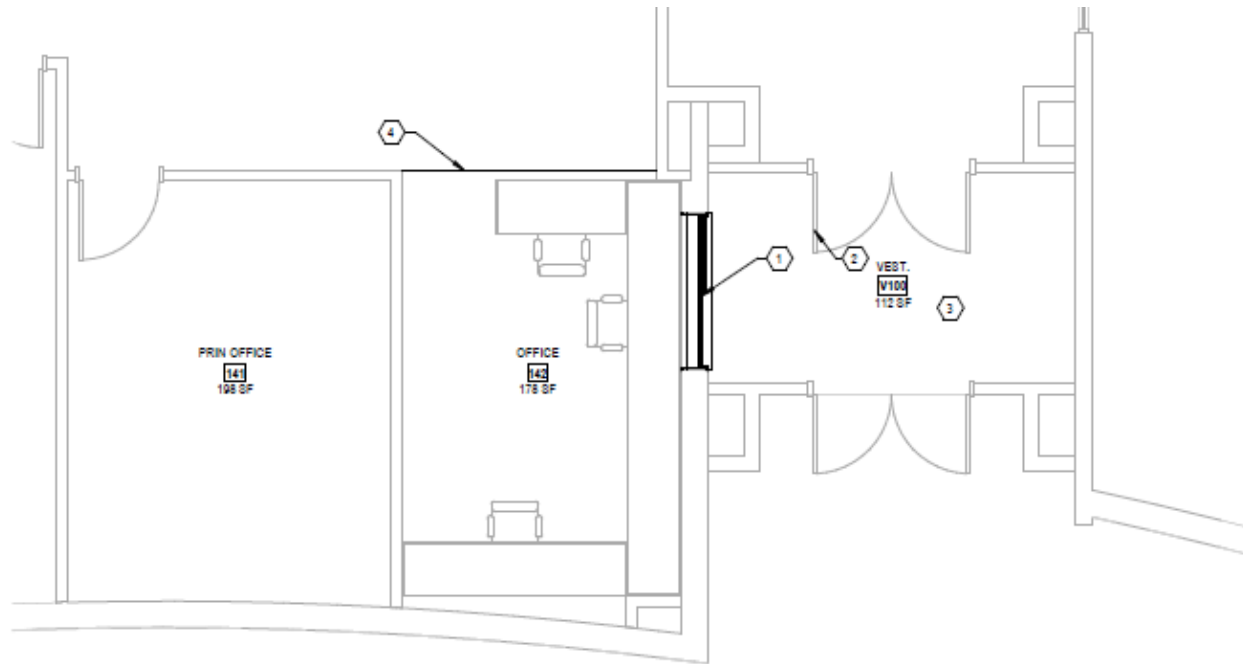
Construction
Documents
Bids 3/15



Efficiency Future Ready Blue Heron ES

Construction
Documents
Bids 3/15

MOA – TBD

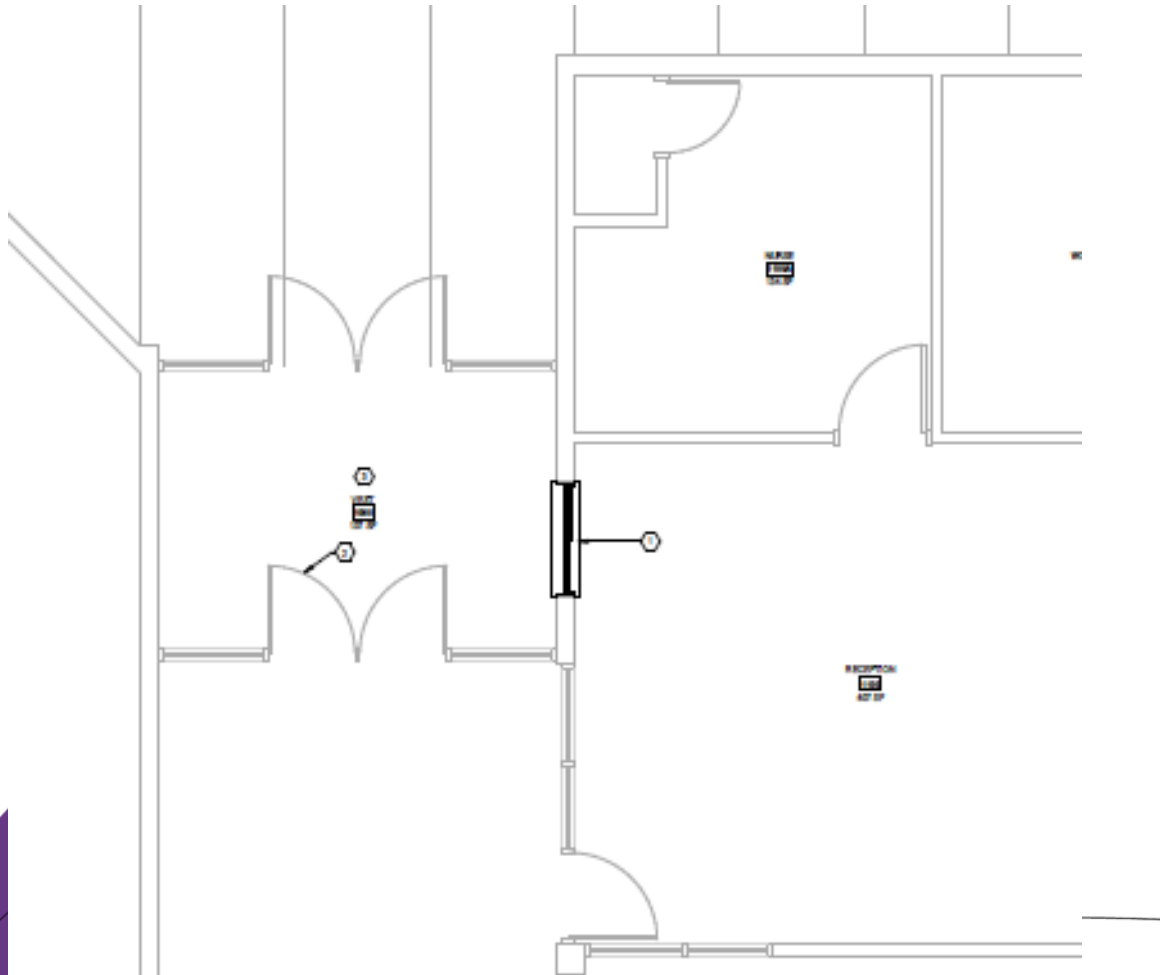


1 LEVEL 1 - ENLARGED PLAN OF MAIN ENTRY
1/4" = 1'-0"

Efficiency Future Ready Colorow ES

MOA – TBD

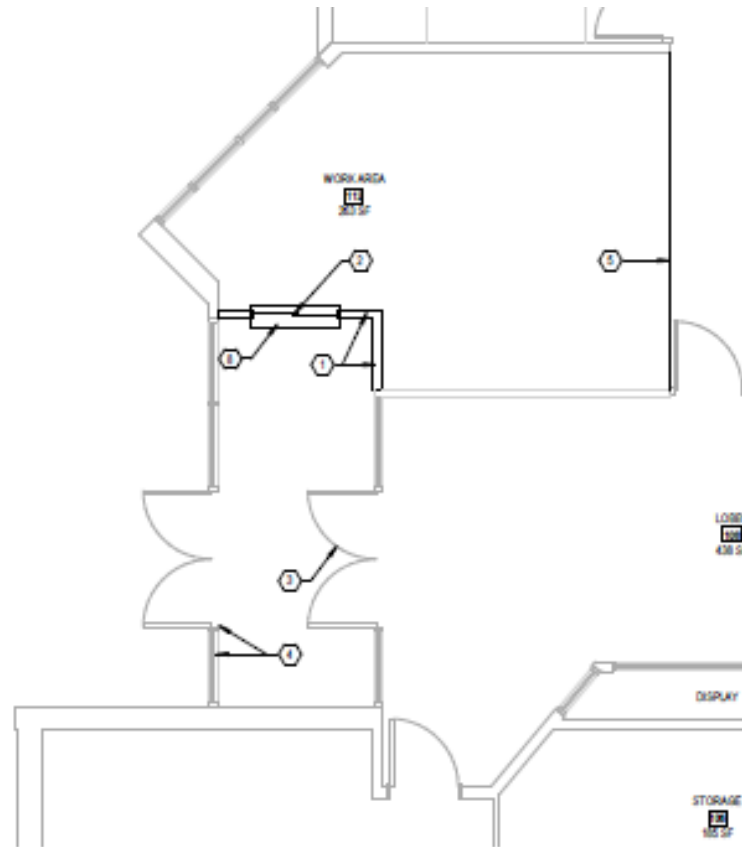
Construction
Documents
Bids 3/15



Efficiency Future Ready Ute Meadows ES

Construction
Documents
Bids 3/15

MOA – TBD



1 ENLARGED PLAN - MAIN ENTRY
WF=10'

Efficiency Future Ready Warren Tech North

Construction
Documents
Bids 3/15/22

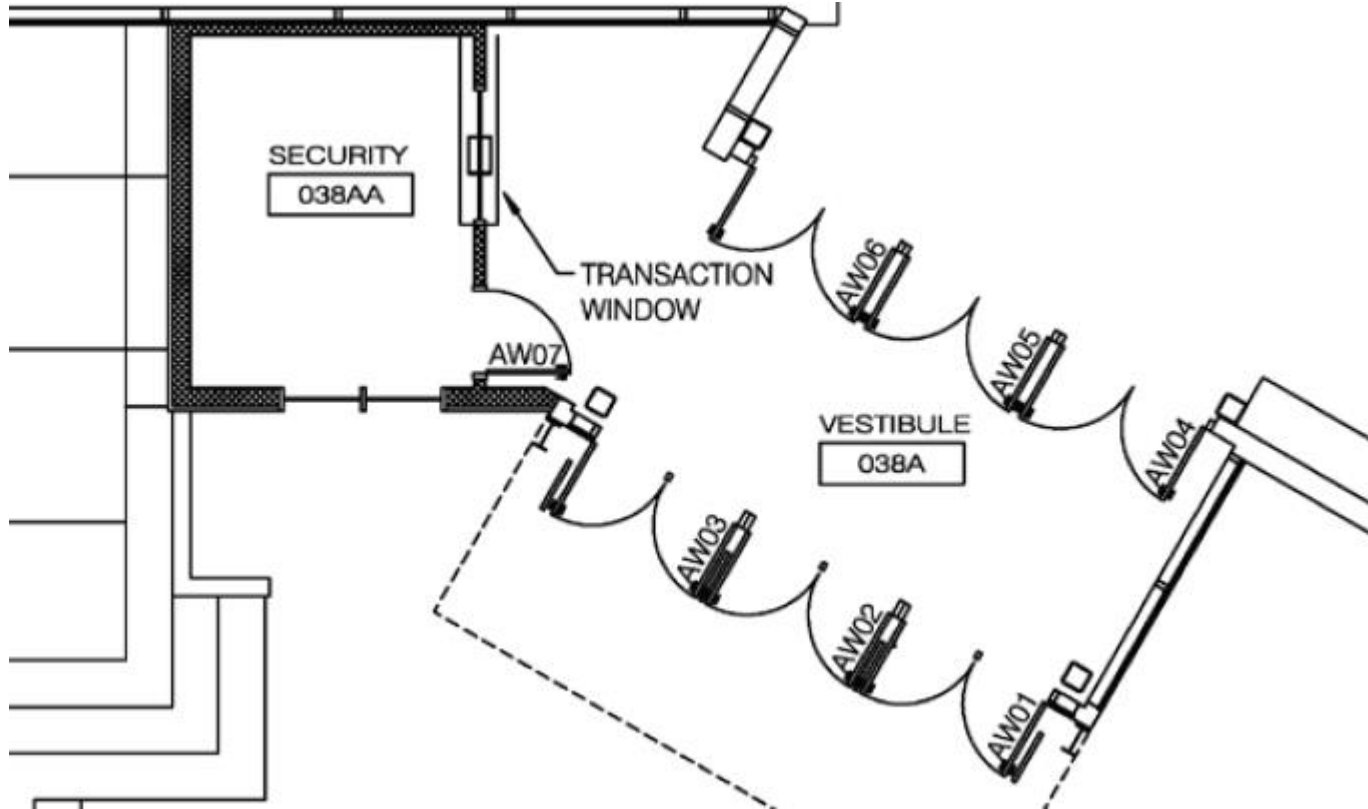
LOA – TBD



Efficiency Future Ready Arvada West HS

Construction
Documents
Bids 3/15/22

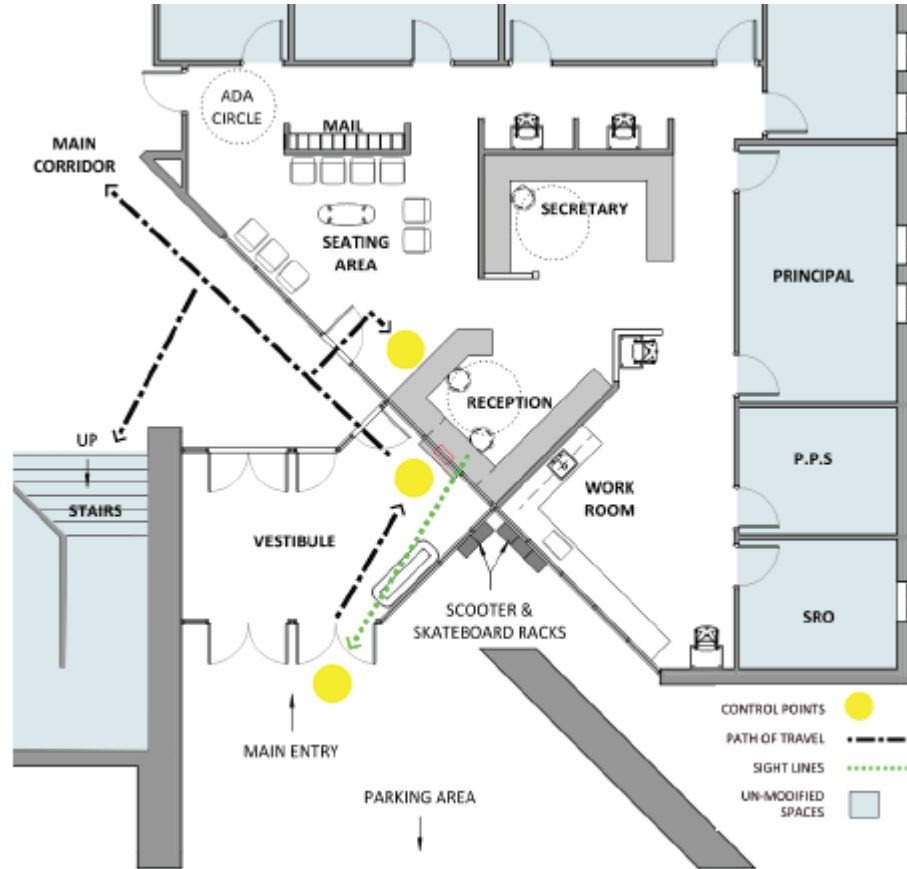
LOA – TBD



Efficiency Future Ready Mandalay MS

Construction
Documents
Bids 3/8/22

RB+B – TBD

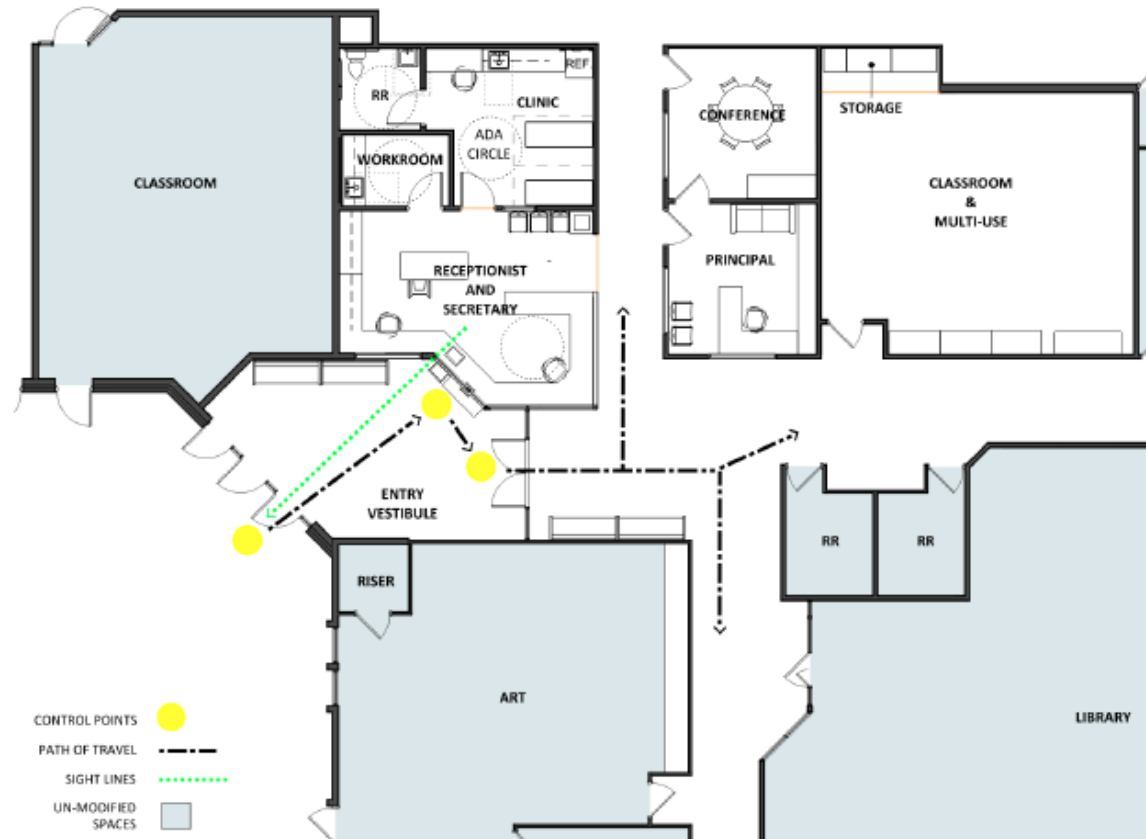


Proposed Secure Entry Plan

Efficiency Future Ready Warder ES

Construction
Documents
Bids 3/8/22

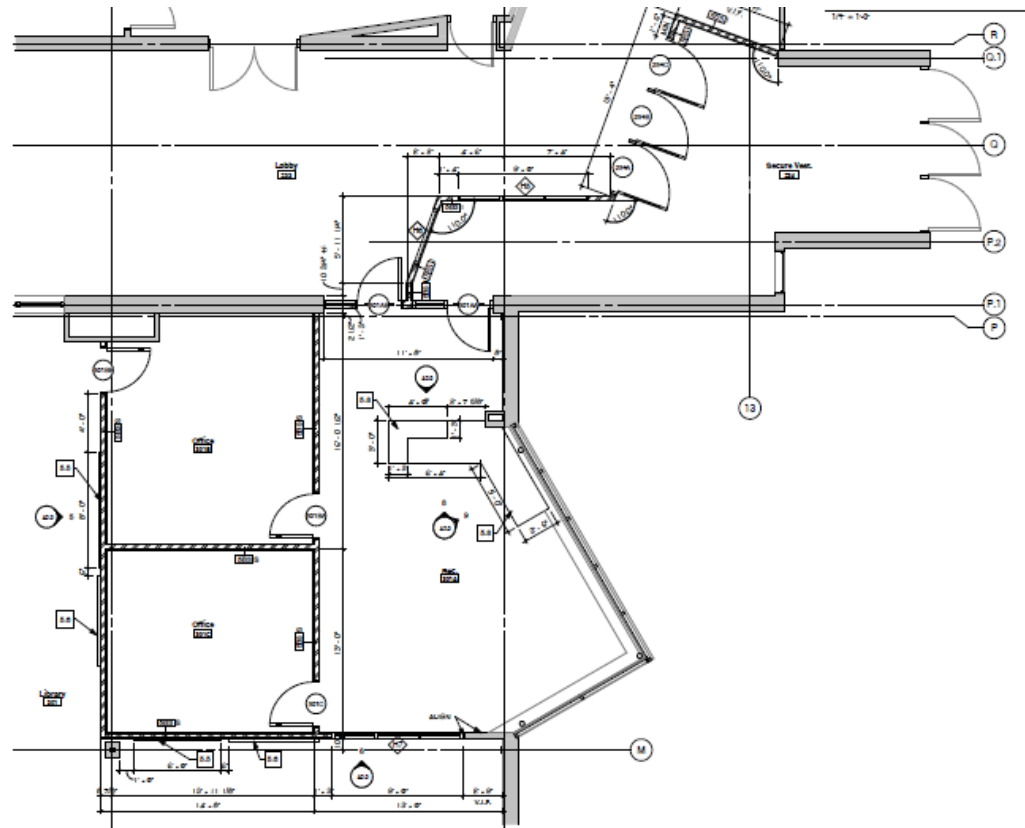
RB+B – TBD



Efficiency Future Ready North Arvada MS

Construction
Documents
Bids 3/22/22

Eidos – TBD

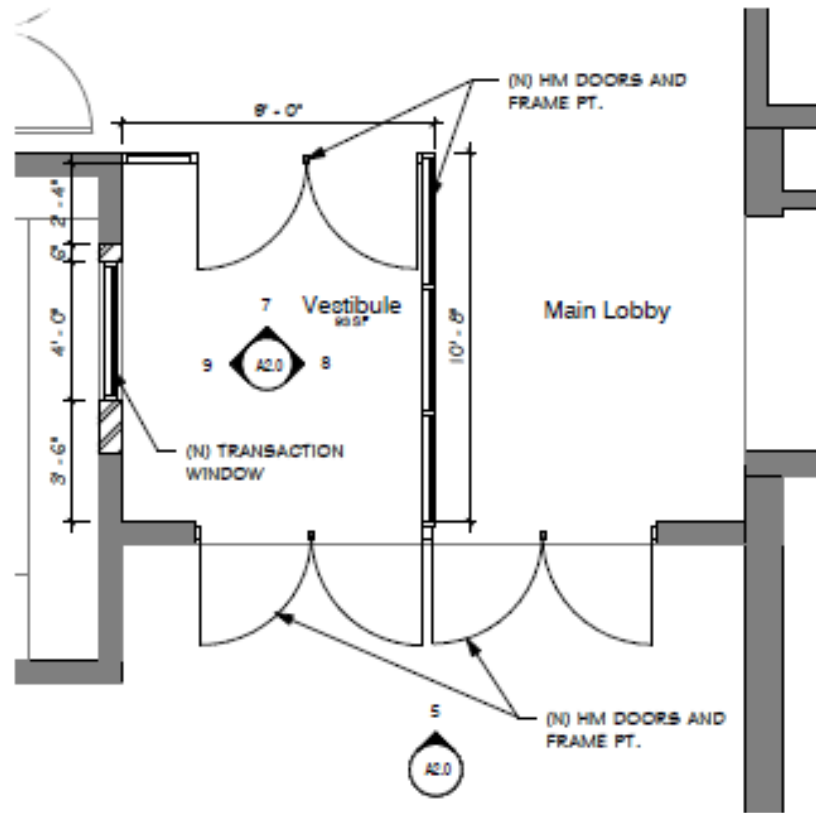


4. Secure Vestibule and Office Enlarged Plan
1/8" = 1'-0"

Efficiency Future Ready Slater ES

Construction
Documents
Bids 3/17/22

Eidos – TBD



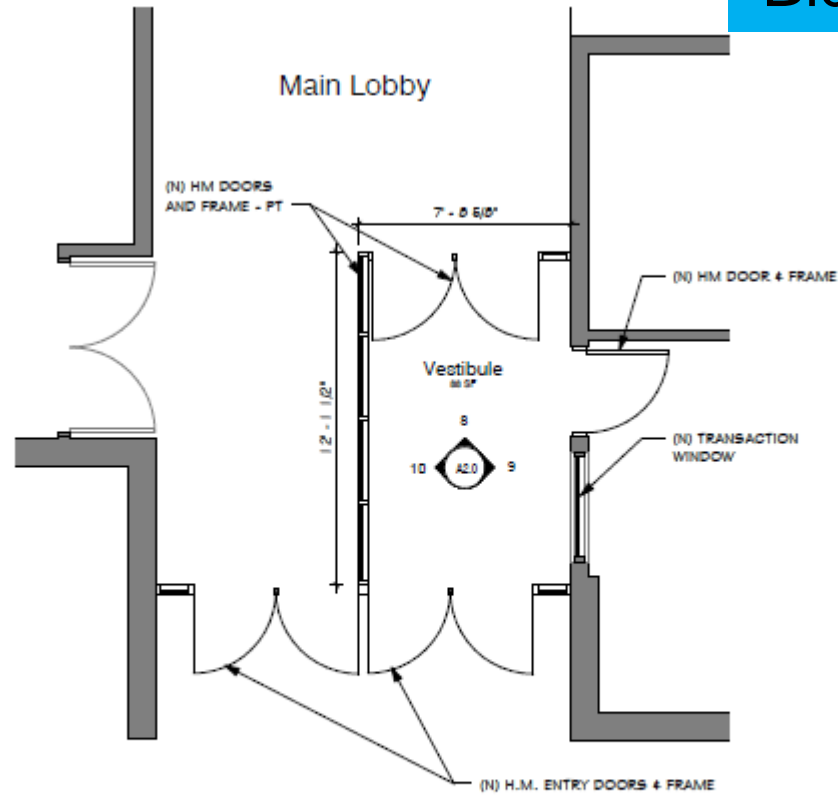
4. Enlarged Plan

1/4" = 1'-0"

Efficiency Future Ready Wilmore Davis ES

Construction
Documents
Bids 3/17/22

Eidos – TBD



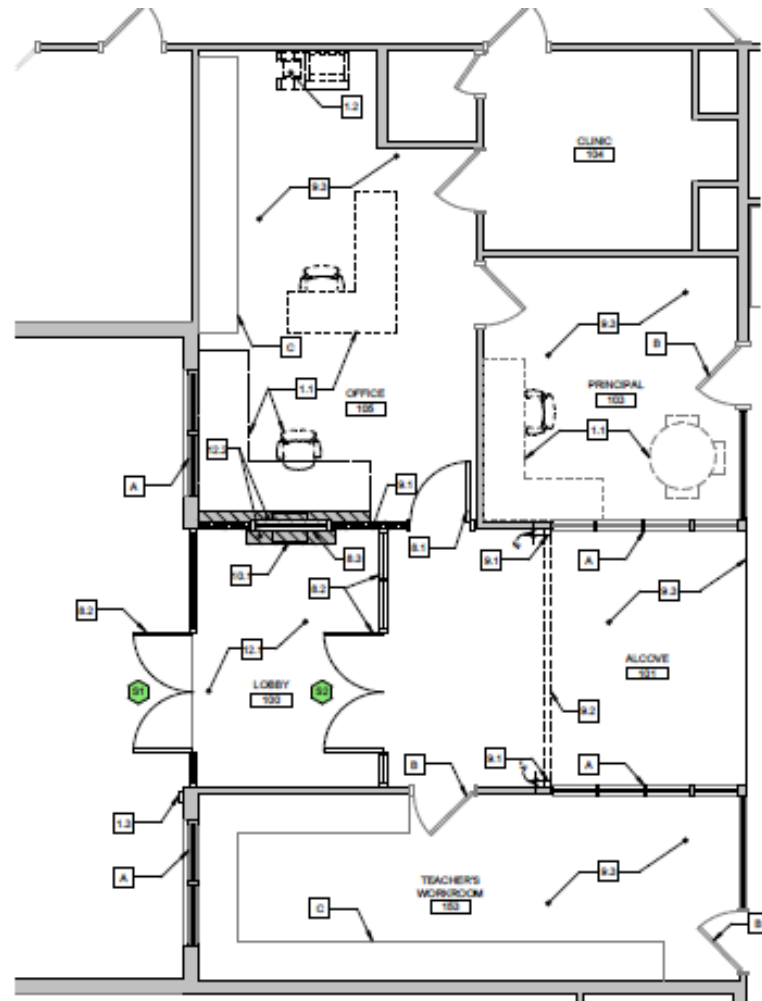
1. Enlarged Plan

1/4" = 1'-0"

Efficiency Future Ready Peck ES

Construction
Documents
Bids 3/23/22

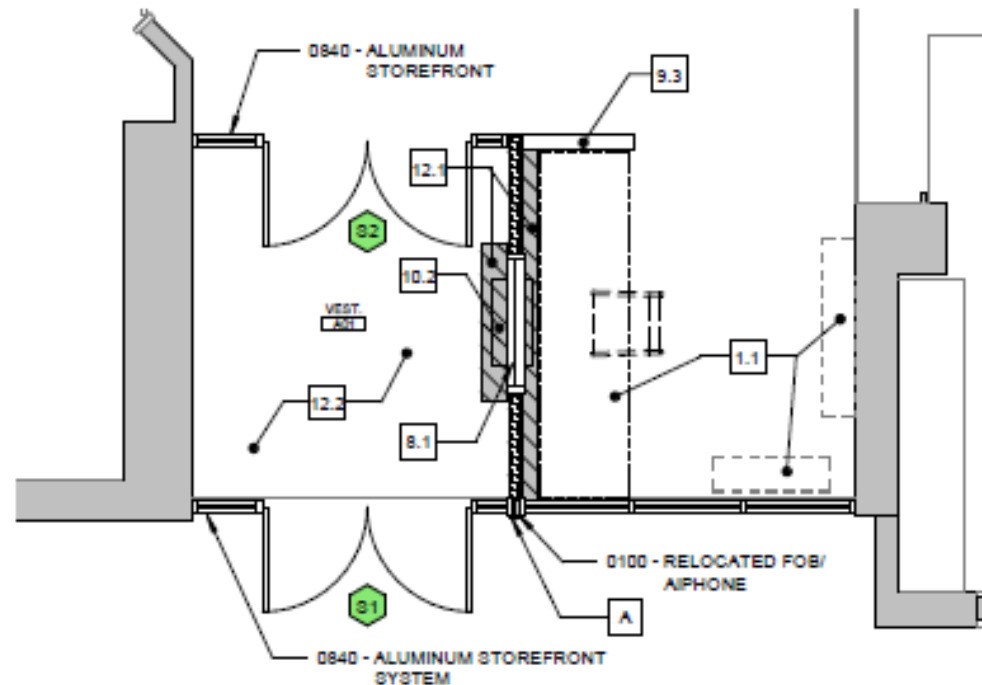
Larson Incitti – TBD



Efficiency Future Ready Secret ES

Construction
Documents
Bids 3/23/22

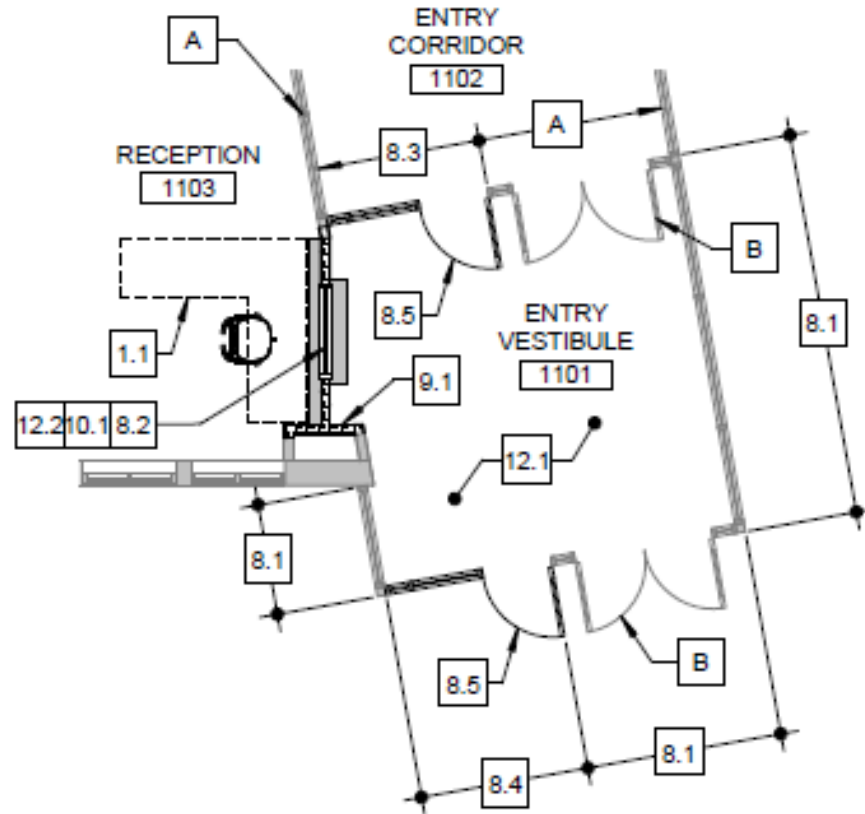
Larson Incitti – TBD



Efficiency Future Ready Creighton MS

Construction
Documents
Bids 3/23/22

Larson Incitti – TBD



Efficiency Future Ready Wheat Ridge HS

Design
Development

Eidos – TBD

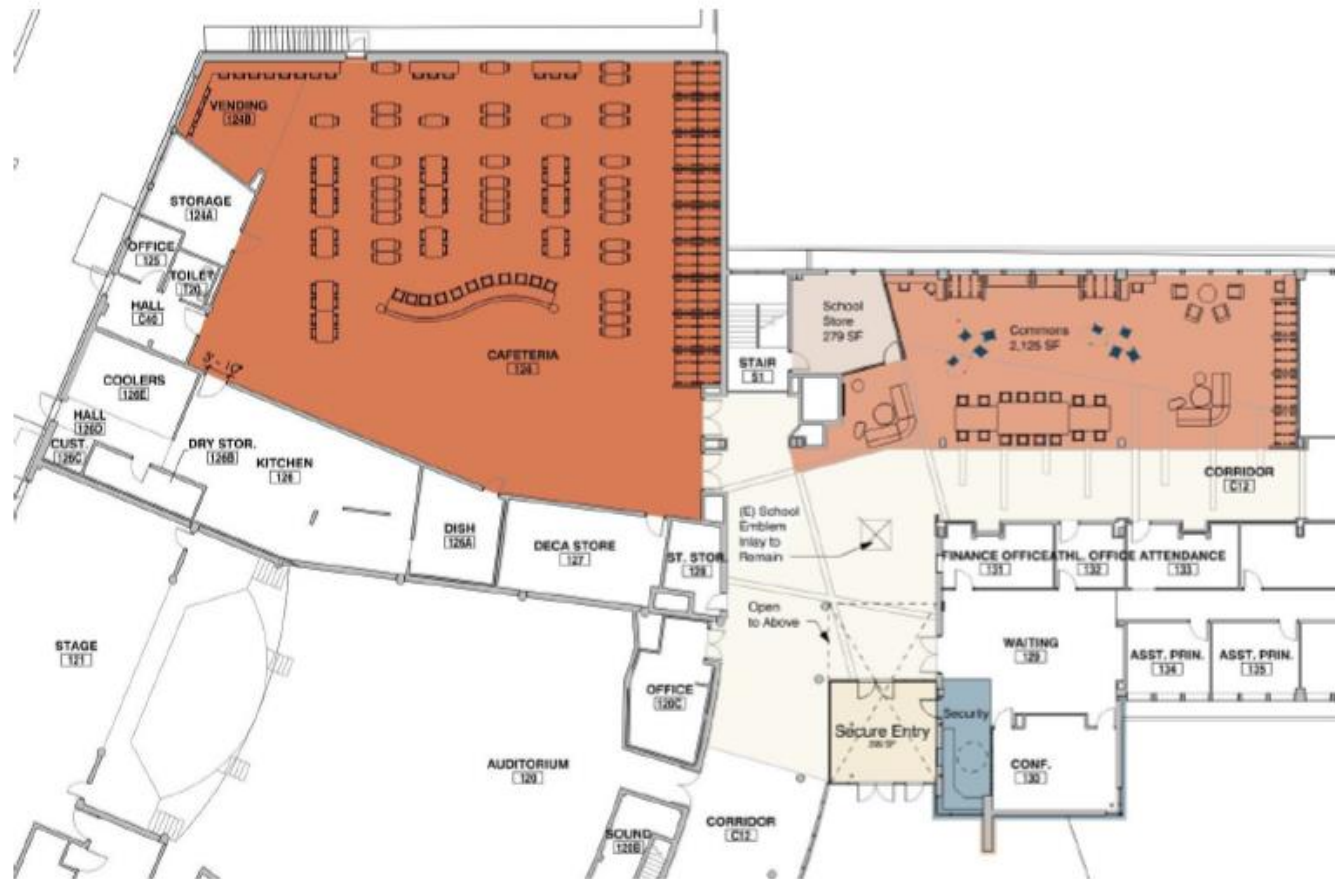


Efficiency Future Ready Wheat Ridge HS

Design
Development

Eidos – TBD

Entry | Cafeteria | Commons:



Efficiency Future Ready Wheat Ridge HS

Design Development

Commons:



Next Meeting 3/17/22